

12,17,20,25,32TS Tail Stock (Manual Type)



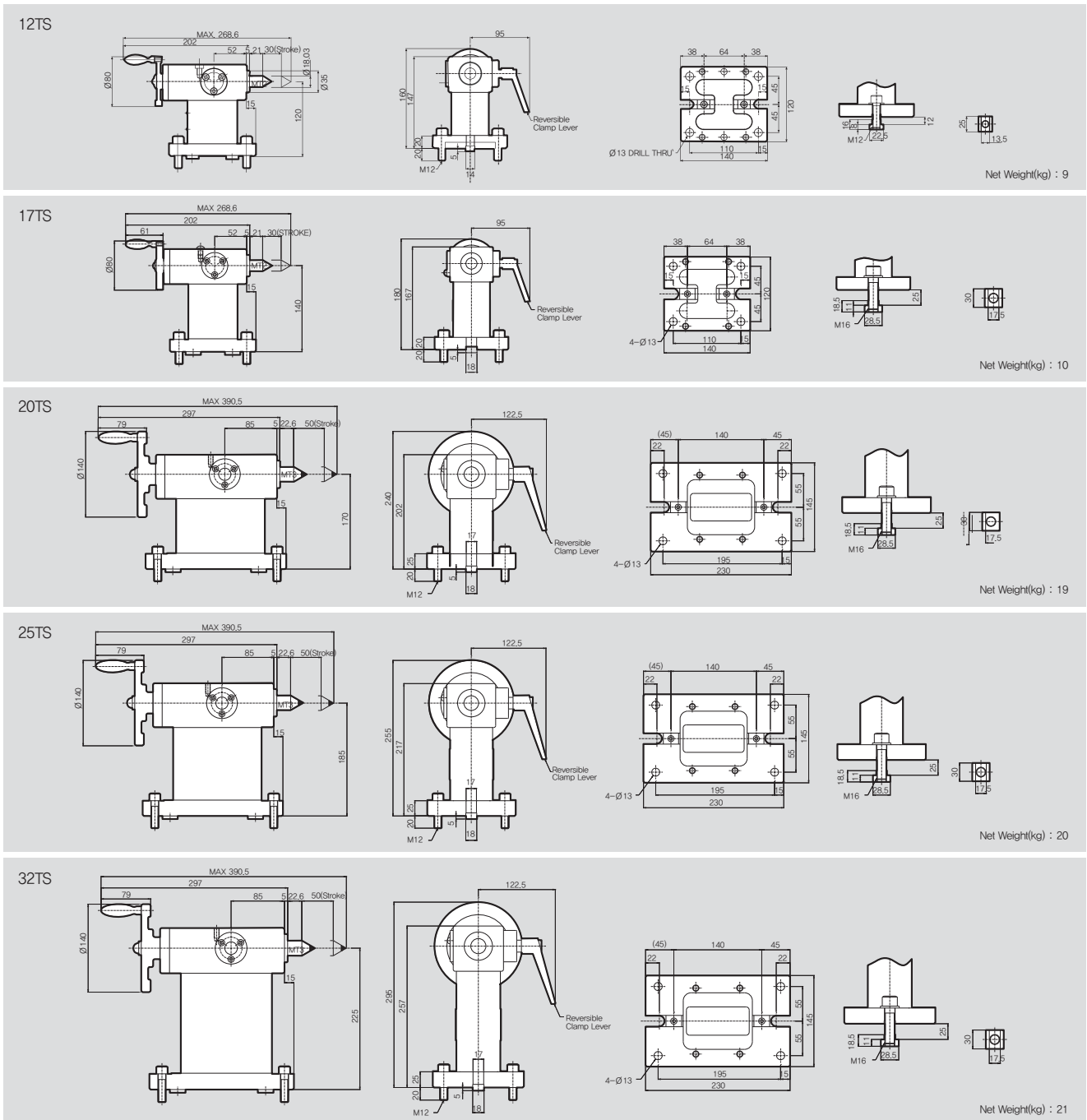
Application / Benefits

Center of Main Axis support, Usable Clamp Lever for Both side

Model No.

17 TS

TYPE : TS-Series / Tail Stock
Apply Model / S-170



43,51,65TS Tail Stock (Manual Type)



Application / Benefits

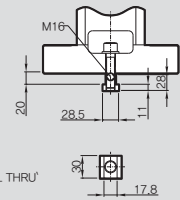
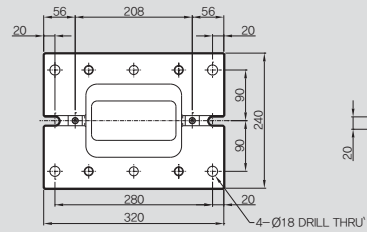
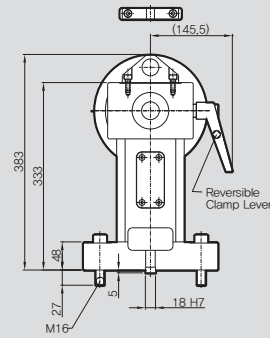
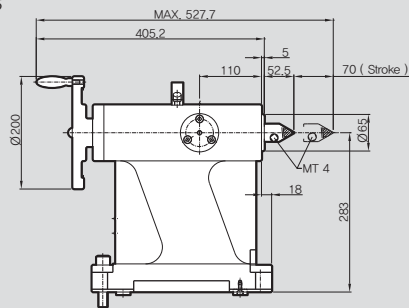
Center of Main Axis support, Usable Clamp Lever for Both side

Model No.

43 TS

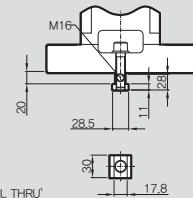
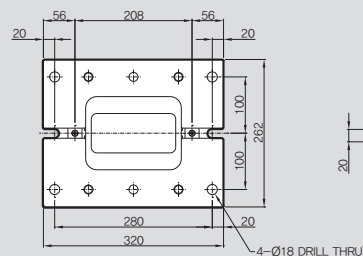
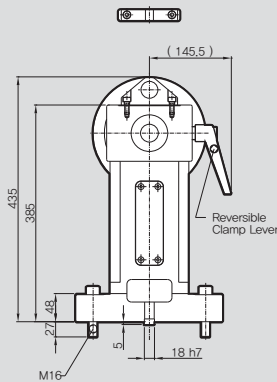
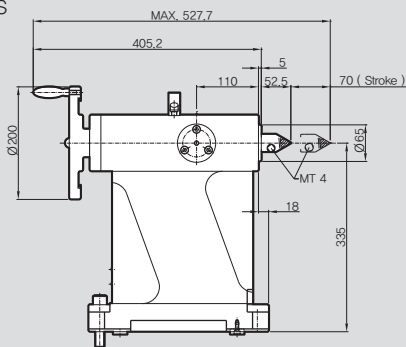
TYPE : TS-Series / Tail Stock
Apply Model / S-430

43TS



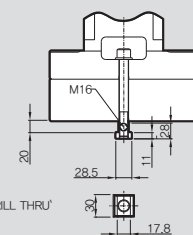
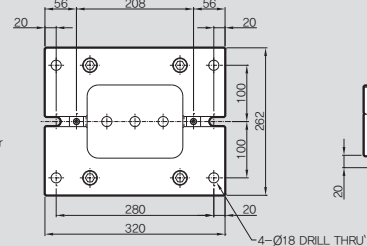
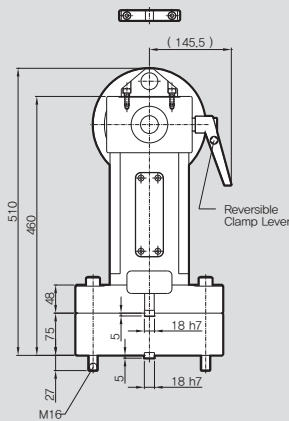
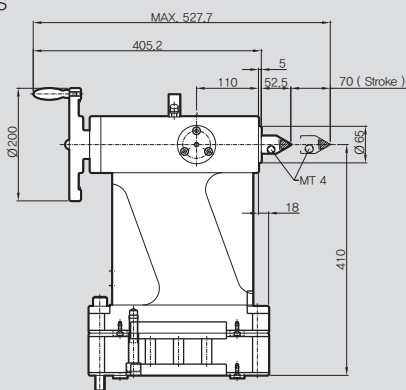
Net Weight(kg) : 70

51TS



Net Weight(kg) : 95

65TS



Net Weight(kg) : 135

17,20,25,32TS-AH Tail Stock (Air / Hydraulic Type)



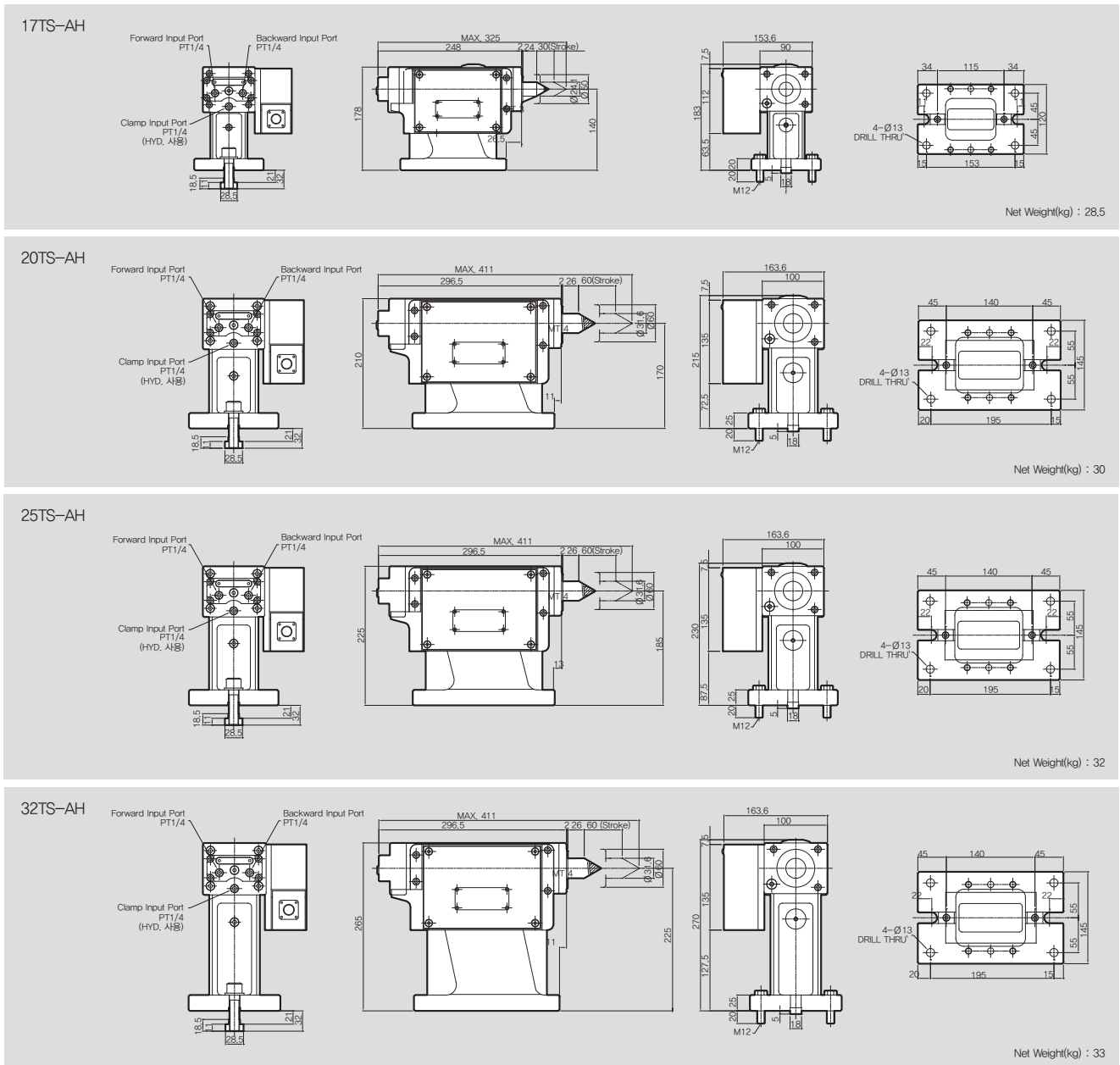
Application / Benefits

For both Hydraulic and Pneumatic operation
Applicable to automation system, Hydraulic Clamp Max. 35bar

Model No.

17 TS-AH

Clamp : Air / Hydraulic
TYPE : TS-Series / Tail Stock
Apply Model / S-170



NC Rotary Table

17,20,25,32SP-A Tail Spindle (Air Clamp Type)



Application / Benefits

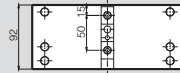
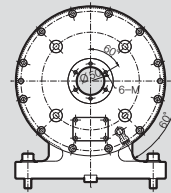
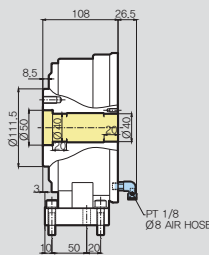
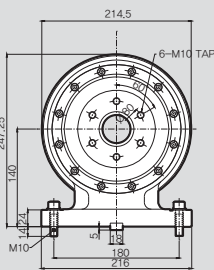
Rotation of Work & Jig with Weight Support, Air Clamp type

Model No.

17 SP-A

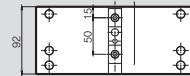
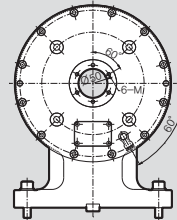
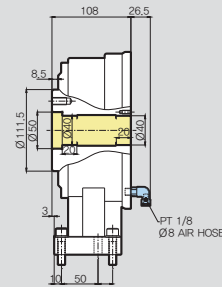
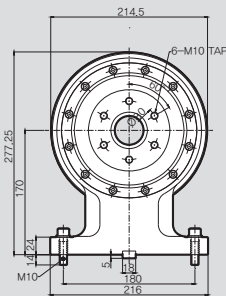
Clamp / Air
TYPE : SP-A Series / Tail Spindle
Apply Model / S-170

17SP-A



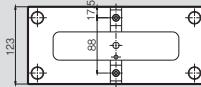
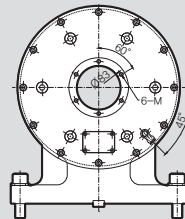
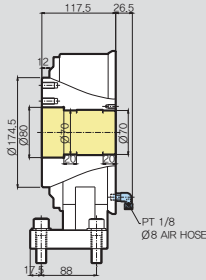
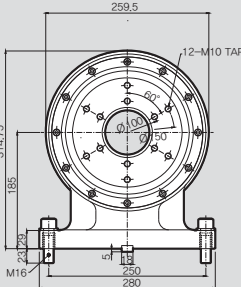
Net Weight(kg) : 26

20SP-A



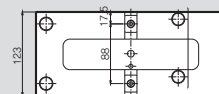
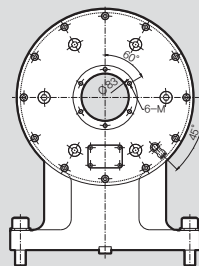
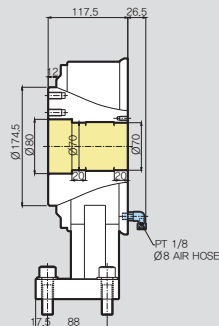
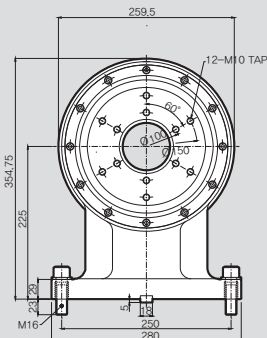
Net Weight(kg) : 33

25SP-A



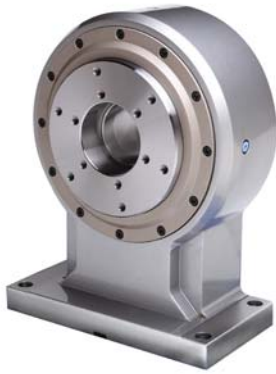
Net Weight(kg) : 60

32SP-A



Net Weight(kg) : 64

20,25,32SP-H Tail Spindle (Hydraulic Clamp Type)



Application / Benefits

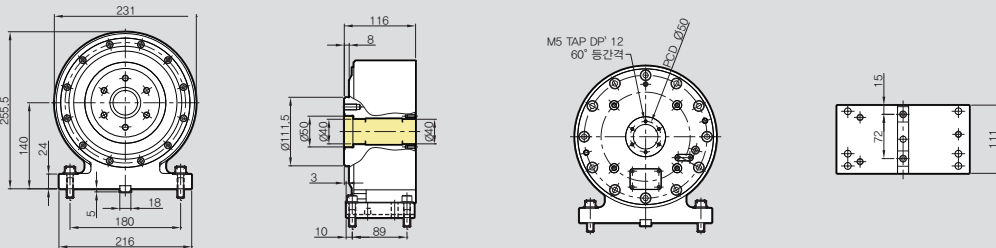
Rotation of Work & Jig with Weight Support, Hydraulic Clamp type

Model No.

17 SP-H

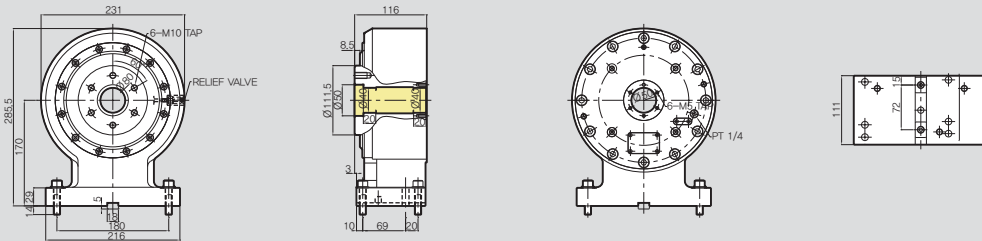
Hydraulic Type
TYPE : SP-H Series / Tail Spindle
Apply Model / HRS-174

17SP-H



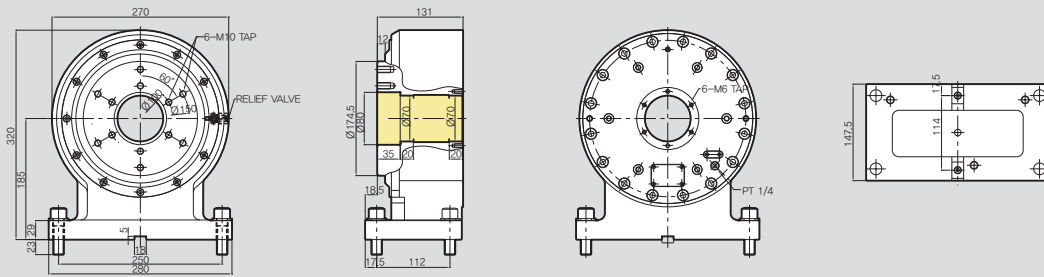
Net Weight(kg) : 28

20SP-H



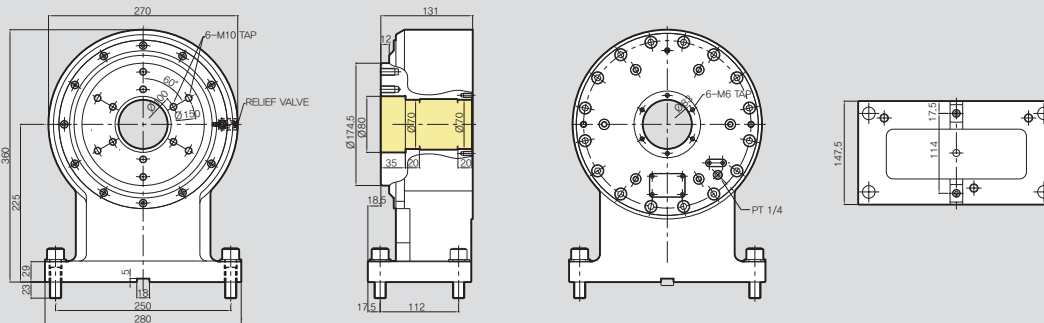
Net Weight(kg) : 35

25SP-H



Net Weight(kg) : 62

32SP-H



Net Weight(kg) : 66

NC Rotary Table

50AH-C Air Booster (Single)



Application / Benefits

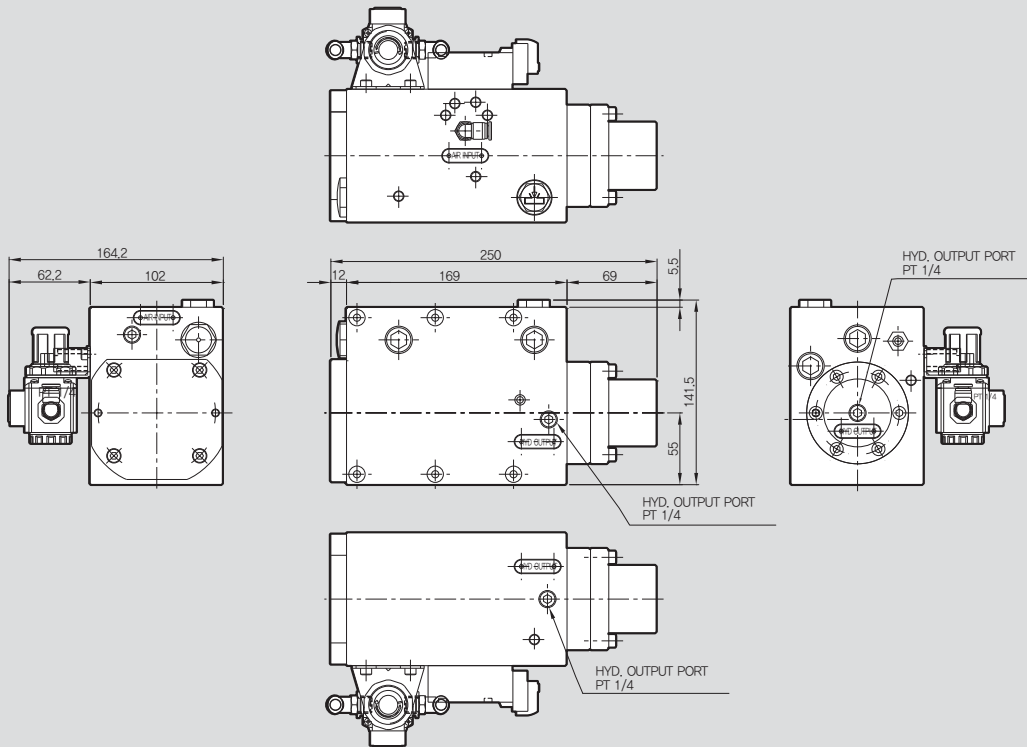
Effects of hydraulic clamp force using pneumatic S series Large Type, HRS series applicable

Model No.

50 AH-C

Operation Type / Single
 TYPE : AH -C series / Air Booster
 Pressure

50AH-C



SPECIFICATIONS

Input Air Pressure	0.4 ~ 0.45
Output Hydraulic Pressure	3.2 ~ 3.6
Solenoid Voltage	DC 24V
Multiplication Ratio	1 : 8

Recommended Oil	Turbine Oil #32
Discharge Rate	50cc
Weight	7

50AH-T Air Booster (Twin)



Application / Benefits

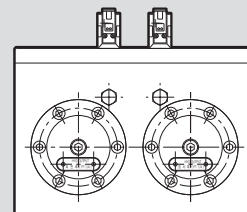
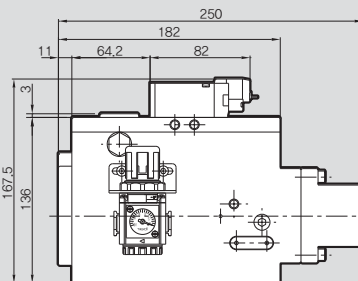
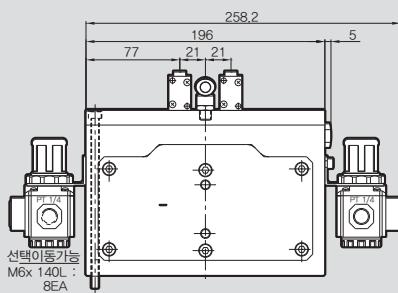
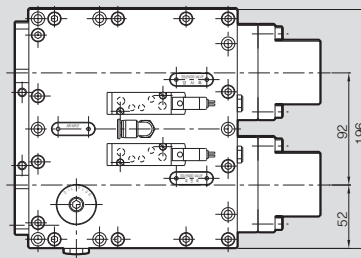
Effects of hydraulic clamp force using pneumatic TR, MTR series Large Type, HRS series applicable

Model No.

50 AH-T



50AH-T



SPECIFICATIONS

Input Air Pressure	0.4 ~ 0.45
Output Hydraulic Pressure	3.2 ~ 3.6
Solenoid Voltage	DC 24V
Multiplication Ratio	1 : 8

Recommended Oil	Turbine Oil #32
Discharge Rate	50cc
Weight	12.5