

HD-TYPE

- 보급형 라이브센터
- 범용 선반사용에 적합
- CAP 회전방식(이물질 유입 방지)

- Economical Live Center
- For Wide-use lathe
- CAP Rotation Type(Prevention of the inflow of foreign substance)



HDC TYPE

초경타입
Carbide Type



HDS TYPE

바이트 간섭을 줄이기 위한 몸체 최소화
Minimized Body for less bite interference



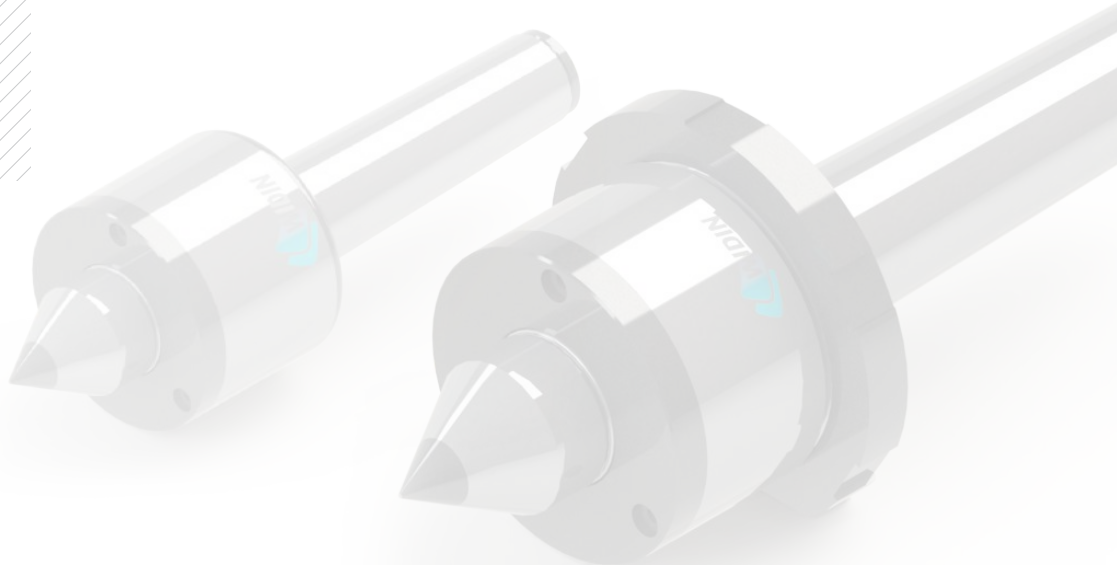
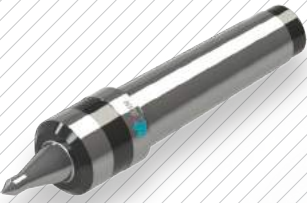
HDSC TYPE

바이트 간섭을 줄이기 위한 몸체 최소화
/ 초경타입
Minimized Body for less bite interference /
Carbide Type



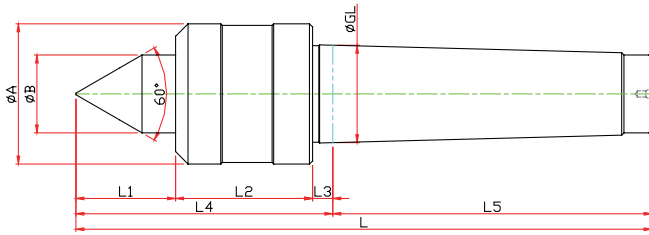
HDSTH TYPE

바이트 간섭 최소화
Minimize the bite-interference



HD-TYPE

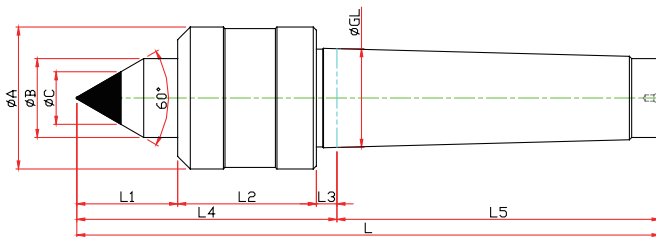
※ 보급형 라이브센터 Economical live center



Model	Order Number	Morse Taper	Dimension									Weight MAX.	R.P.M MAX.	Run Out
			GL	A	B	L1	L2	L3	L4	L5	L			
LC-1HD	070001	NO.1	12,065	34	15	21	37	3.5	61.5	53.5	115	120	5000	0.003
LC-2HD	070002	NO.2	17,780	40	18	24	37	5	66	64	130	140	4000	0.003
LC-3HD	070003	NO.3	23,825	45	25	32	44	5	81	81	162	190	3800	0.003
LC-4HD	070004	NO.4	31,267	45	25	32	44	6.5	82.5	102.5	185	190	3800	0.003
LC-5HD	070005	NO.5	44,399	78	38	47	66	6.5	119.5	129.5	249	350	2000	0.005
LC-6HD	070006	NO.6	63,384	102	55	62	82	8	152	182	334	1200	2000	0.005

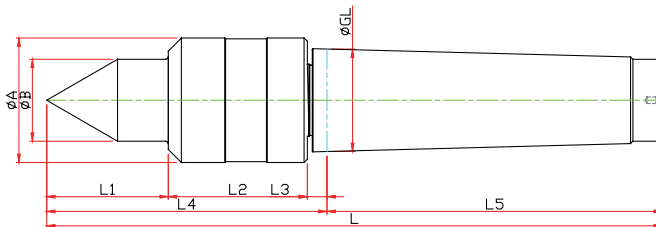
HDC-TYPE

※ 초경타입 Carbide Type



Model	Order Number	Morse Taper	Dimension										Weight MAX.	R.P.M MAX.	Run Out
			GL	A	B	L1	L2	L3	L4	L5	C	L			
LC-3HDC	071003	NO.3	23,825	25	45	32	44	5	81	81	10	162	190	3800	0.003
LC-4HDC	071004	NO.4	31,267	25	45	32	44	6.5	82.5	102.5	14	185	190	3800	0.003
LC-5HDC	071005	NO.5	44,399	38	78	47	66	6.5	119.5	129.5	18	249	350	2000	0.005
LC-6HDC	071006	NO.6	63,384	55	102	62	82	8	152	182	25	334	1200	2000	0.005

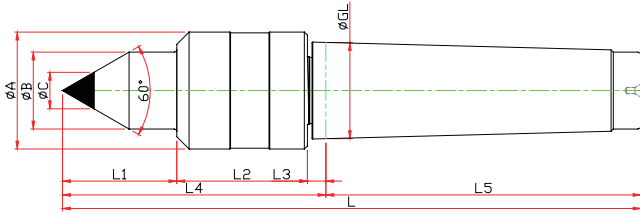
HDS-TYPE



Model	Order Number	Morse Taper	Dimension									Weight MAX.	R.P.M MAX.	Run Out
			GL	A	B	L1	L2	L3	L4	L5	L			
LC-2HDS	070012	NO.2	17,780	34	15	25	40	5	70	64	134	70	4500	0.003
LC-3HDS	070013	NO.3	23,825	36	18	27.5	40.5	5	73	81	154	80	4500	0.003
LC-4HDS	070014	NO.4	31,267	38	22	32	42.5	6	80.5	102.5	183	80	4500	0.003
LC-5HDS	070015	NO.5	44,399	64	30	47	56.5	10	113.5	129.5	243	230	2000	0.005
LC-6HDS	070016	NO.6	63,384	86	42	60	66.5	10	136.5	182	318.5	600	1500	0.005

HDSC-TYPE

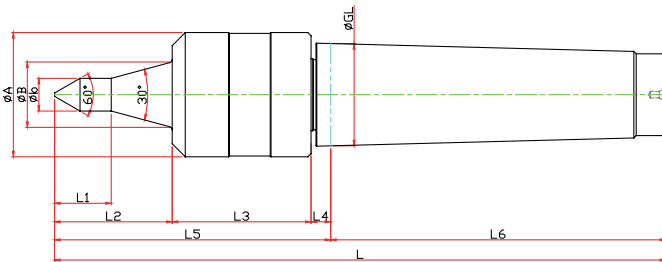
- ※ 보급형 라이브센터 Economical live center
- ※ 범용장비 사용에 적합 Suitable for lathe
- ※ 적정 RPM(3800)이하 Optimal RPM(below 3,800)



Model	Order Number	Morse Taper	Dimension										Weight MAX.	R.P.M MAX.	Run Out
			GL	A	B	L1	L2	L3	L4	L5	C	L			
LC-3HDSC	071012	NO.3	23,825	36	18	27.5	40.5	5	73	81	10	154	80	4500	0.003
LC-4HDSC	071013	NO.4	31,267	38	22	32	42.5	6	80.5	102.5	14	183	80	4500	0.003
LC-5HDSC	071014	NO.5	44,399	64	30	47	56.5	10	113.5	129.5	18	243	230	2000	0.005
LC-6HDSC	071015	NO.6	63,384	86	42	60	66.5	10	136.5	182	30	318.5	600	1500	0.005

HDSTH-TYPE

- ※ 나사공전용 타입 The type of thread milling
- ※ 절삭유에 잘 견디는 구조
- ※ 3중 베어링 적합
- ※ 적정 RPM(3800)이하 Optimal RPM(below 3,800)



Model	Order Number	Morse Taper	Dimension											Weight MAX.	R.P.M MAX.	Run Out
			GL	A	B	b	L1	L2	L3	L4	L5	L6	L			
LC-3HDSTH-06	073011	NO.3	23,825	36	18	6	12.6	35	40.5	5	80.5	81	161.5	55	3800	0.003
LC-3HDSTH-08	073012					8	16.3									
LC-3HDSTH-10	073013					10	20.1									
LC-3HDSTH-12	073014					12	23.8									
LC-4HDSTH-06	074011	NO.4	31,267	38	20	6	10.1	36.2	40.5	6	84.5	102.5	187	65	3800	0.003
LC-4HDSTH-08	074012					8	13.9									
LC-4HDSTH-10	074013					10	17.6									
LC-4HDSTH-12	074014					12	21.3									
LC-5HDSTH-06	075011	NO.5	44,399	64	24	6	13.4	47	56.5	10	113.5	129.5	243	150	3800	0.003
LC-5HDSTH-08	075012					8	17.1									
LC-5HDSTH-10	075013					10	20.8									
LC-4HDSTH-12	075014					12	24.6									

HD SPECIAL

