

## LC-NK

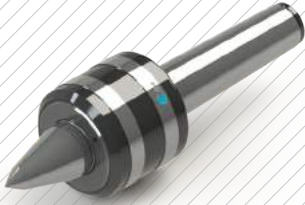
- 고하중물 작업용 센터
- 준 고속형
- 오래가는 센터 수명
- SHAFT 경도 HRC58~62
- RUN OUT 0.003
- 테이퍼 롤러 베어링 사용

- Center for heavy duty
- Semi High Speed
- Long life
- Hardness of SHAFT HRC58~62
- RUN OUT 0.003
- Use Taper Roller Bearing



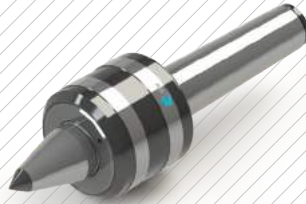
### NKB TYPE

바이트 간섭 최소화  
Minimize the bite-interference



### NKBC TYPE

바이트 간섭 최소화 / 초경타입  
Minimize the bite-interference / Carbide Type



### NKBN TYPE

바이트 간섭 최소화 / 너트타입  
Minimize the bite-interference / Nut Type



### NKBCN TYPE

바이트 간섭 최소화 / 초경, 너트 타입  
Minimize the bite-interference / Carbide, Nut Type



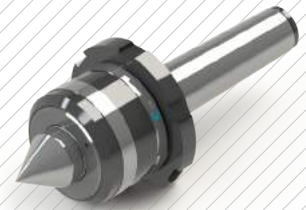
### NKC TYPE

초경타입  
Carbide Type



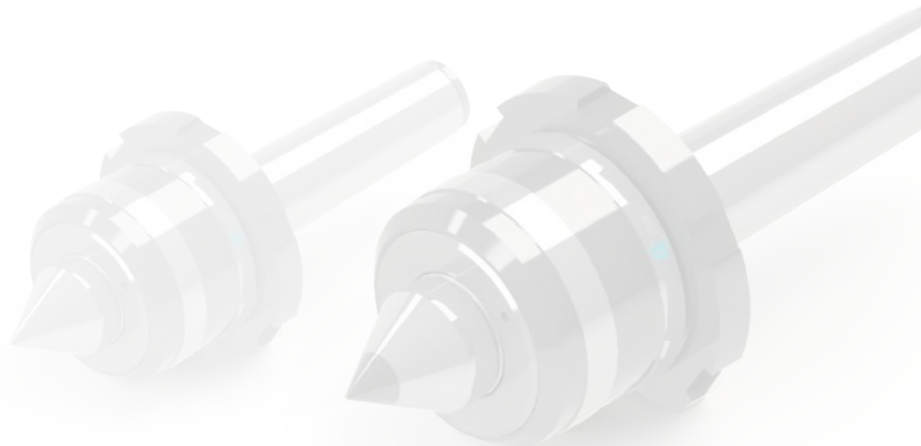
### NKN TYPE

너트타입  
Nut Type



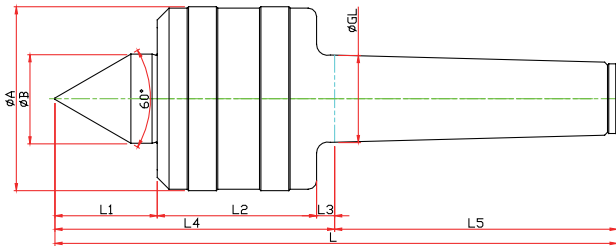
### NKCN TYPE

초경, 너트타입  
Carbide, Nut Type



# NK-TYPE

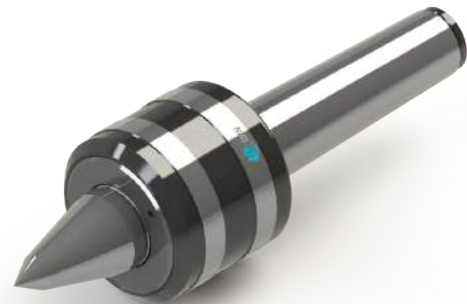
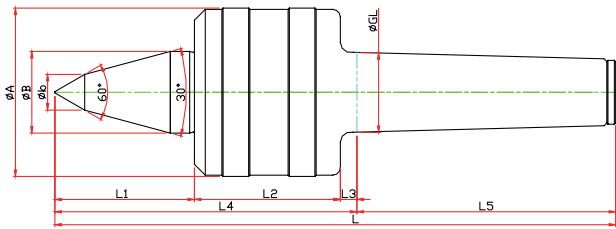
※ 고하중물 전용 센터, 준고속형 Center for heavy duty and Semi High Speed



Model	Order Number	Morse Taper	Dimension									Weight MAX.	R.P.M MAX.	Run Out
			GL	A	B	L1	L2	L3	L4	L5	L			
LC-3NK	020003	NO.3	23,825	52	22	29	42	5	76	80	156	1900	5000	0.003
LC-4NK	020004	NO.4	31,267	66	32	37	57	6.5	100.5	101.5	202	2700	3800	0.003
LC-5NK	020005	NO.5	44,399	80	40	45.5	57	6.5	109	129.5	238.5	3200	3400	0.005
LC-6NK	020006	NO.6	63,348	132	65	65	100	8	173	182	355	10000	1800	0.005
LC-7NK	020007	NO.7	83,058	168	72	84	128	10	222	250	427	17200	1200	0.005

# NKB-TYPE

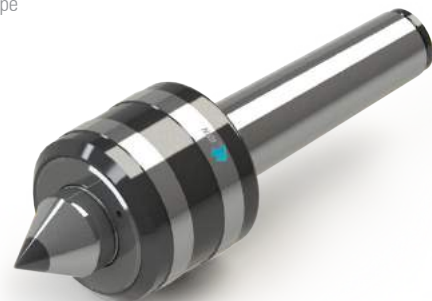
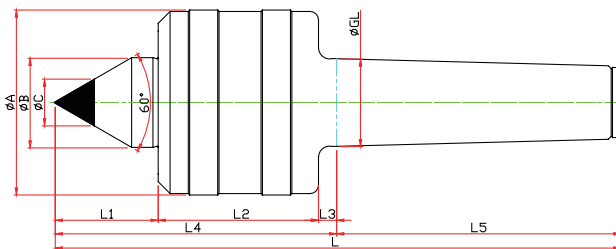
※ SHAFT 확장(바이트 간섭 최소화) SHAFT EXTENSION(Minimize the bite-interference)



Model	Order Number	Morse Taper	Dimension										Weight MAX.	R.P.M MAX.	Run Out
			GL	A	B	b	L1	L2	L3	L4	L5	L			
LC-3NKB	021003	NO.3	23,825	52	22	10	48	42	5	95	80	175	1900	5000	0.003
LC-4NKB	021004	NO.4	31,267	66	32	14	53	57	6.5	116.5	101.5	218	2700	3800	0.003
LC-5NKB	021005	NO.5	44,399	80	40	18	65.5	57	6.5	129	129.5	258.5	3200	3400	0.005
LC-6NKB	021006	NO.6	63,348	132	65	25	78	100	8	186	182	368	10000	1800	0.005

# NKC-TYPE

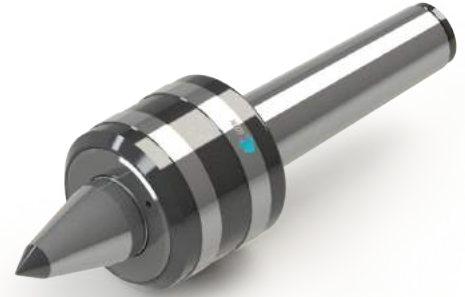
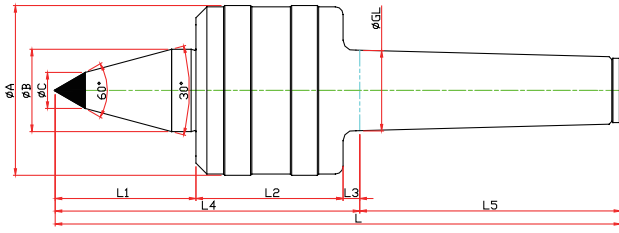
※ 초경타입 Carbide Type



Model	Order Number	Morse Taper	Dimension										Weight MAX.	R.P.M MAX.	Run Out
			GL	A	B	L1	L2	L3	L4	L5	C	L			
LC-3NKC	020103	NO.3	23,825	52	22	29	42	5	76	80	10	156	1900	5000	0.003
LC-4NKC	020104	NO.4	31,267	66	32	37	57	6.5	100.5	101.5	14	202	2700	3800	0.003
LC-5NKC	020105	NO.5	44,399	80	40	45.5	57	6.5	109	129.5	18	238.5	3200	3400	0.005
LC-6NKC	020106	NO.6	63,348	132	65	65	100	8	173	182	25	355	10000	1800	0.005

# NKBC-TYPE

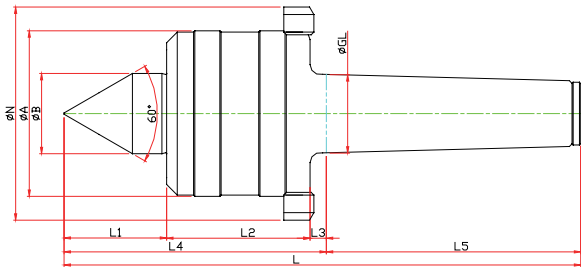
※ SHAFT 확장(바이트 간섭 최소화) SHAFT EXTENSION(Minimize the bite-interference)  
 ※ 초경타입 Carbide Type



Model	Order Number	Morse Taper	Dimension										Weight MAX.	R.P.M MAX.	Run Out
			GL	A	B	L1	L2	L3	L4	L5	C	L			
LC-3NKBC	021103	NO.3	23,825	52	22	48	42	5	95	80	10	175	1900	5000	0,003
LC-4NKBC	021104	NO.4	31,267	66	32	53	57	6.5	116.5	101.5	14	218	2700	3800	0,003
LC-5NKBC	021105	NO.5	44,399	80	40	65.5	57	6.5	129	129.5	18	258.5	3200	3400	0,005
LC-6NKBC	021106	NO.6	63,348	132	65	78	100	8	186	182	25	368	10000	1800	0,005

# NKN-TYPE

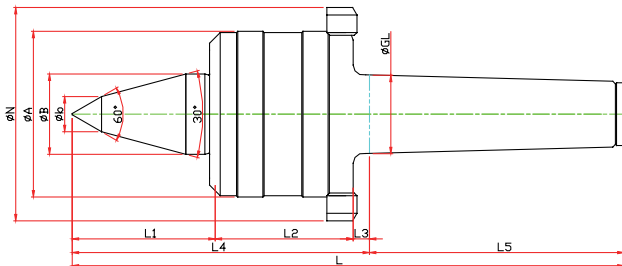
※ 너트, 초경타입 Carbide, Nut Type



Model	Order Number	Morse Taper	Dimension										Weight MAX.	R.P.M MAX.	Run Out
			GL	A	B	L1	L2	L3	L4	L5	N	L			
LC-3NKN	020013	NO.3	23,825	52	22	29	42	5	76	80	70	156	1900	5000	0,003
LC-4NKN	020014	NO.4	31,267	66	32	37	57	6.5	100.5	101.5	85	202	2700	3800	0,003
LC-5NKN	020015	NO.5	44,399	80	40	45.5	57	6.5	109	129.5	98	238.5	3200	3400	0,005
LC-6NKN	020016	NO.6	63,348	132	65	65	100	8	173	182	165	355	10000	1800	0,005
LC-7NKN	020017	NO.7	83,058	168	72	84	128	10	222	250	210	427	17200	1200	0,005

# NKBN-TYPE

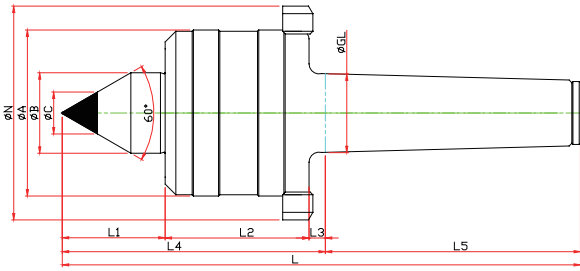
※ SHAFT 확장(바이트 간섭 최소화) SHAFT EXTENSION(Minimize the bite-interference)  
 ※ 너트 타입 Nut Type



Model	Order Number	Morse Taper	Dimension										Weight MAX.	R.P.M MAX.	Run Out	
			GL	A	B	b	L1	L2	L3	L4	L5	N				L
LC-3NKBN	021013	NO.3	23,825	52	22	10	48	42	5	95	80	70	175	980	5000	0,003
LC-4NKBN	021014	NO.4	31,267	66	32	14	53	57	6.5	116.5	101.5	85	218	1400	3800	0,003
LC-5NKBN	021015	NO.5	44,399	80	40	18	65.5	57	6.5	129	129.5	98	258.5	1900	3400	0,005
LC-6NKBN	021016	NO.6	63,348	132	65	25	78	100	8	186	182	165	368	5100	1800	0,005

# NKCN-TYPE

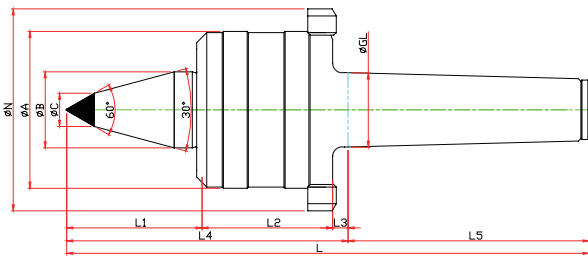
※ 너트, 초경타입 Carbide, Nut Type



Model	Order Number	Morse Taper	Dimension											Weight MAX.	R.P.M MAX.	Run Out
			GL	A	B	L1	L2	L3	L4	L5	C	N	L			
LC-3NKCN	020113	NO.3	23,825	52	22	29	42	5	76	80	10	70	156	1900	5000	0,003
LC-4NKCN	020114	NO.4	31,267	66	32	37	57	6.5	100.5	101.5	14	85	202	2700	3800	0,003
LC-5NKCN	020115	NO.5	44,399	80	40	45.5	57	6.5	109	129.5	18	98	238.5	3200	3400	0,005
LC-6NKCN	020116	NO.6	63,348	132	65	65	100	8	173	182	25	165	355	10000	1800	0,005

# NKBCN-TYPE

※ SHAFT 확장(바이트 간섭 최소화) SHAFT EXTENSION(Minimize the bite-interference)  
 ※ 너트, 초경타입 Carbide, Nut Type



Model	Order Number	Morse Taper	Dimension											Weight MAX.	R.P.M MAX.	Run Out
			GL	A	B	L1	L2	L3	L4	L5	C	N	L			
LC-3NKBCN	021113	NO.3	23,825	52	22	48	42	5	95	80	10	70	175	980	5000	0,003
LC-4NKBCN	021114	NO.4	31,267	66	32	53	57	6.5	116.5	101.5	14	85	218	1400	3800	0,003
LC-5NKBCN	021115	NO.5	44,399	80	40	65.5	57	6.5	129	129.5	18	98	258.5	1900	3400	0,005
LC-6NKBCN	021116	NO.6	63,348	132	65	78	100	8	186	182	25	165	368	5100	1800	0,005

NC-TYPE

NCP-TYPE

NK · NKD TYPE

GR · SM TYPE

SMP-TYPE

D50 TYPE

HD-TYPE

PT-TYPE

LM CENTER

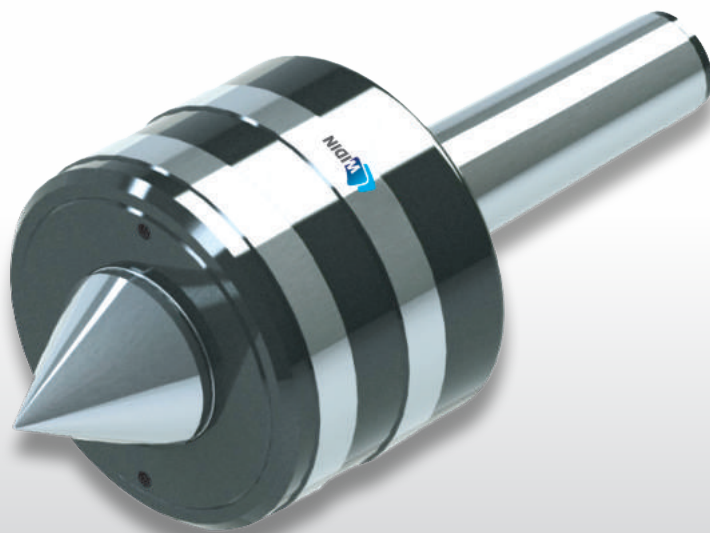
LM-H CENTER

# 03

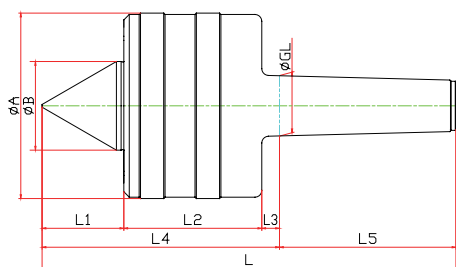
NK · NKD-TYPE

## LC-NKD

- 고하중물 작업용 라이브센터
- 준 고속형
- 수명이 길다
- 테이퍼 롤러 베어링 사용
- SHAFT 열처리경도 HRC58~62
- RUN OUT 0.005
- Live Center for heavy duty
- Semi High Speed
- Long life
- Use Taper Roller Bearing
- Hardness of SHAFT : HRC58~62



## NKD-TYPE



Model	Order Number	Morse Taper	Dimension									Weight MAX.	R.P.M MAX.	Run Out
			GL	A	B	L1	L2	L3	L4	L5	L			
LC-5NKD	090005	NO.5	44,399	136	65	60	101	13	174	129,5	303,5	13000	3400	0,005
LC-6NKD	090006	NO.6	63,348	148	70	80	110,5	15	205,5	181	387,5	16000	1800	0,005
LC-7NKD	090007	NO.7	83,058	200	95	90	141	20	251	250	501	22000	1200	0,005

# 04

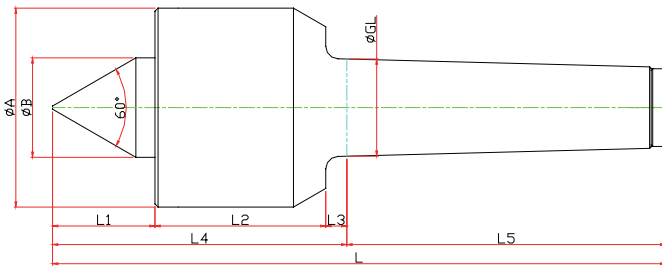
GR · SM-TYPE

## LC-GR

- 연마기 전용 라이브센터
- 고정도(0.002), 고하중 지지가능
- Live Center for Grinding machine
- High Precision(0.002) Center for heavy duty



## GR-TYPE



Model	Order Number	Morse Taper	Dimension									Weight MAX.	R.P.M MAX.	Run Out
			GL	A	B	L1	L2	L3	L4	L5	L			
LC-4GR	080004	NO.4	31.267	71	40	45	59.5	6.5	111	101.5	212.5	1300	7000	0.002
LC-5GR	080005	NO.5	44.399	88	50	45	66	6.5	117.5	129.5	247	3500	4500	0.002
LC-6GR	080006	NO.6	63.348	114	52	55	92	8	155	182	337	5000	3400	0.002
LC-7GR	080007	NO.7	83.058	200	98	78	132	10	200	250	470	20000	1900	0.002



# 04

GR · SM-TYPE

## LC-SM

- 고속 회전용 라이브센터
- 고속 스피들 베어링을 사용
- SHAFT 경도 HRc58~62
- RUN OUT 0.003

- Live Center for High Speed Rotation
- Use High Speed Spindle Bearing
- Hardness of SHAFT : HRc58~62
- RUN OUT 0.003



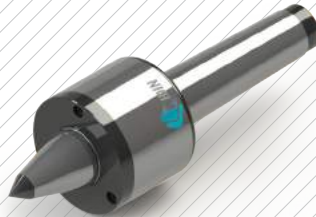
### SMB TYPE

—  
 바이트 간섭 최소화  
 Minimize the bite-interference



### SMBC TYPE

—  
 바이트 간섭 최소화 / 초경타입  
 Minimize the bite-interference / Carbide Type



### SMBN TYPE

—  
 바이트 간섭 최소화 / 너트타입  
 Minimize the bite-interference / Nut Type



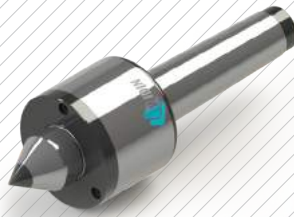
### SMBCN TYPE

—  
 바이트 간섭 최소화 / 초경, 너트 타입  
 Minimize the bite-interference /  
 Carbide, Nut Type



### SMC TYPE

—  
 초경타입  
 Carbide Type



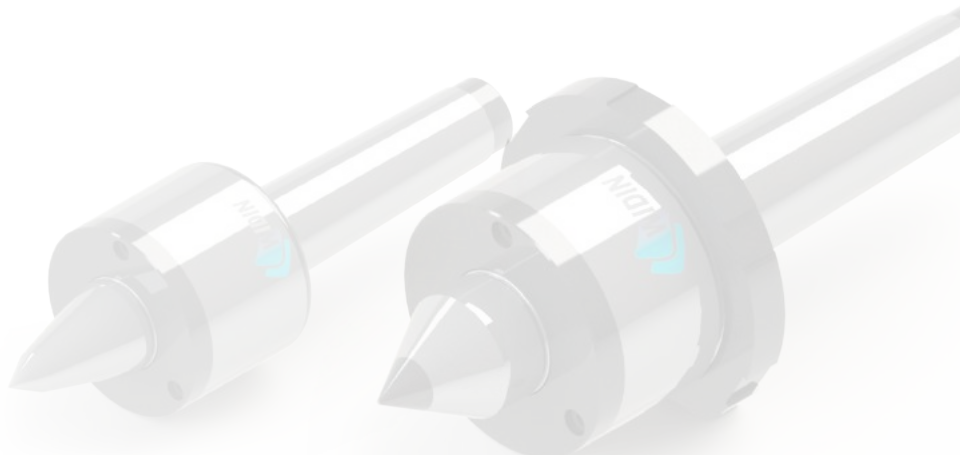
### SMN TYPE

—  
 너트타입  
 Nut Type

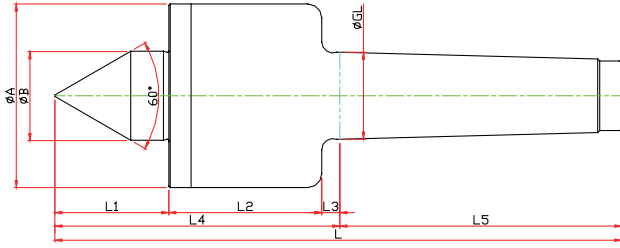


### SMCN TYPE

—  
 초경, 너트타입  
 Carbide, Nut Type



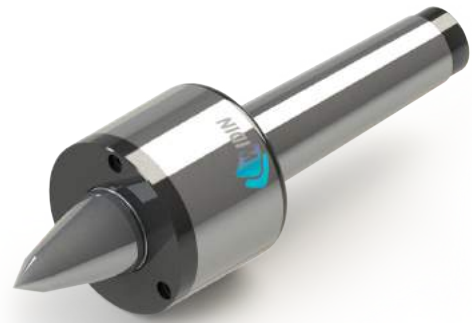
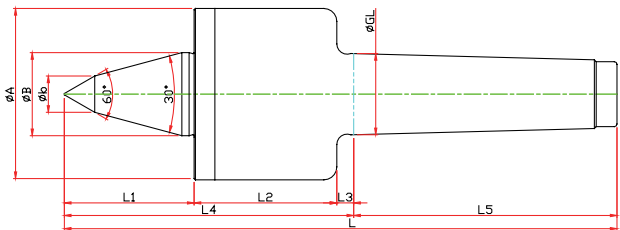
# SM-TYPE



Model	Order Number	Morse Taper	Dimension										Weight MAX.	R.P.M MAX.	Run Out
			GL	A	B	L1	L2	L3	L4	L5	L				
LC-3SM	040003	NO.3	23,825	52	22	30	51	5	86	81	167	330	12000	0.003	
LC-4SM	040004	NO.4	31,267	66	32	41	55	6.5	102.5	101.5	204	1100	10000	0.003	
LC-5SM	040005	NO.5	44,399	82	40	51	75	6.5	132.5	129.5	262	2200	8000	0.005	

# SMB-TYPE

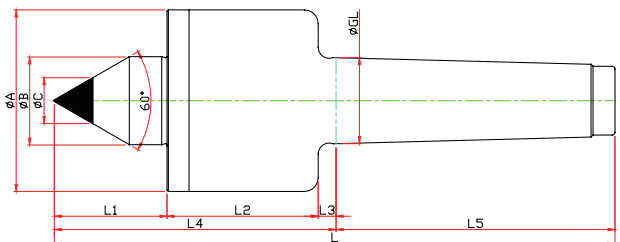
※ SHAFT 확장(바이트 간섭 최소화) SHAFT EXTENTION(Minimize the bite-interference)



Model	Order Number	Morse Taper	Dimension										Weight MAX.	R.P.M MAX.	Run Out
			GL	A	B	b	L1	L2	L3	L4	L5	L			
LC-3SMB	041003	NO.3	23,825	52	22	10	40	51	5	96	81	177	330	12000	0.003
LC-4SMB	041004	NO.4	31,267	66	32	14	50	55	6.5	111.5	101.5	213	1100	10000	0.003
LC-5SMB	041005	NO.5	44,399	82	40	16	65	75	6.5	146.5	129.5	276	2200	8000	0.005

# SMC-TYPE

※ 초경타입 Carbide Type



Model	Order Number	Morse Taper	Dimension										Weight MAX.	R.P.M MAX.	Run Out
			GL	A	B	L1	L2	L3	L4	L5	C	L			
LC-3SMC	040103	NO.3	23,825	52	22	30	51	5	86	81	10	167	330	12000	0.003
LC-4SMC	040104	NO.4	31,267	66	32	41	55	6.5	102.5	101.5	14	204	1100	10000	0.003
LC-5SMC	040105	NO.5	44,399	82	40	51	75	6.5	132.5	129.5	18	262	2200	8000	0.005

NC-TYPE

NCP-TYPE

NK · NKD TYPE

GR · SM TYPE

SMP-TYPE

D50 TYPE

HD-TYPE

PT-TYPE

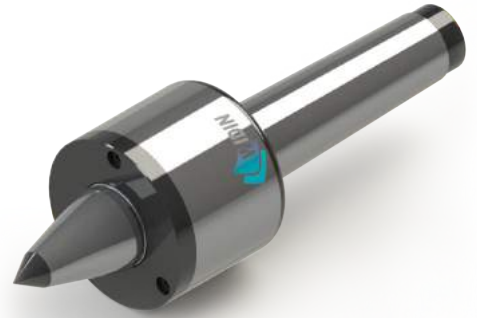
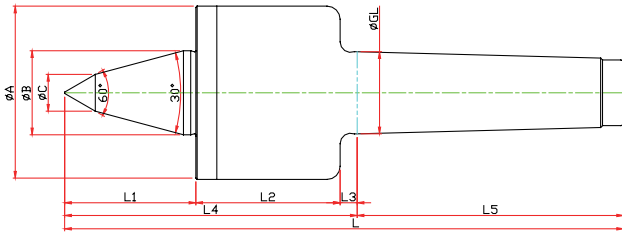
LM CENTER

LM-H CENTER



# SMBC-TYPE

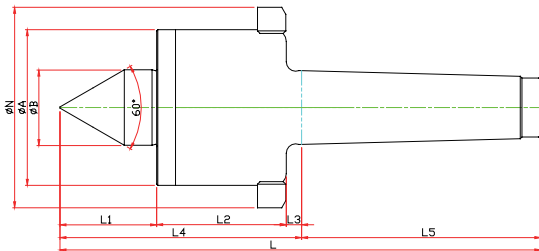
※ SHAFT 확장(바이트 간섭 최소화) SHAFT EXTENSION(Minimize the bite-interference)  
 ※ 초경타입 Carbide Type



Model	Order Number	Morse Taper	Dimension											Weight MAX.	R.P.M MAX.	Run Out
			GL	A	B	b	L1	L2	L3	L4	L5	C	L			
LC-3SMBC	041103	NO.3	23,825	52	22	10	40	51	5	96	81	10	177	330	12000	0.003
LC-4SMBC	041104	NO.4	31,267	66	32	14	50	55	6.5	111.5	101.5	14	213	1100	10000	0.003
LC-5SMBC	041105	NO.5	44,399	82	40	16	65	75	6.5	146.55	129.5	16	276	2200	8000	0.005

# SMN-TYPE

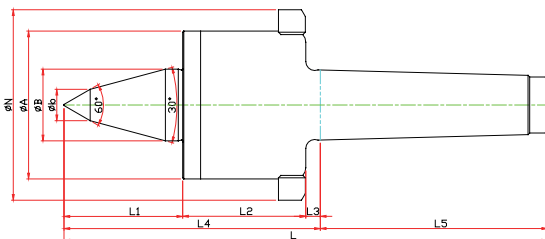
※ 너트 타입 Nut Type



Model	Order Number	Morse Taper	Dimension											Weight MAX.	R.P.M MAX.	Run Out
			GL	A	B	L1	L2	L3	L4	L5	N	L				
LC-3SMN	040013	NO.3	23,825	52	22	30	51	5	86	81	70	167	330	12000	0.003	
LC-4SMN	040014	NO.4	31,267	66	32	41	55	6.5	102.5	101.5	85	204	1100	10000	0.003	
LC-5SMN	040015	NO.5	44,399	82	40	51	75	6.5	132.5	129.5	105	262	2200	8000	0.005	

# SMBN-TYPE

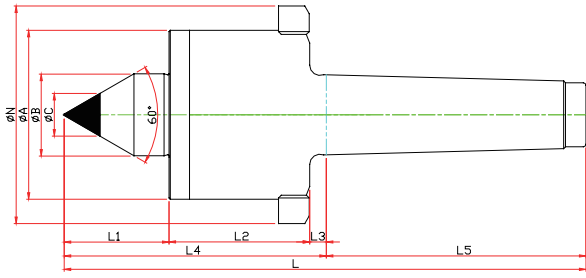
※ SHAFT 확장(바이트 간섭 최소화) SHAFT EXTENSION(Minimize the bite-interference)



Model	Order Number	Morse Taper	Dimension											Weight MAX.	R.P.M MAX.	Run Out
			GL	A	B	b	L1	L2	L3	L4	L5	N	L			
LC-3SMBN	041013	NO.3	23,825	52	22	10	40	51	5	96	81	70	177	330	12000	0.003
LC-4SMBN	041014	NO.4	31,267	66	32	14	50	55	6.5	111.5	101.5	85	213	1100	10000	0.003
LC-5SMBN	041015	NO.5	44,399	82	40	16	65	75	6.5	146.5	129.5	105	276	2200	8000	0.005

# SMCN-TYPE

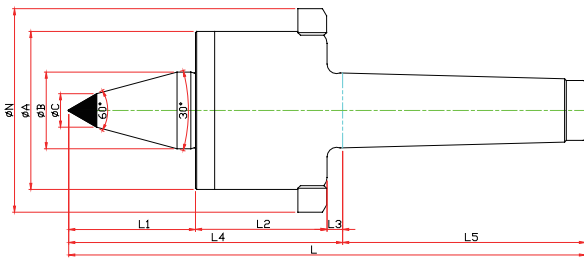
※ 너트, 초경타입 Carbide, Nut Type



Model	Order Number	Morse Taper	Dimension											Weight MAX.	R.P.M MAX.	Run Out
			GL	A	B	C	D	E	F	G	N	T	L			
LC-3SMCN	040113	NO.3	23,825	52	22	30	51	5	86	81	70	10	167	300	12000	0,003
LC-4SMCN	040114	NO.4	31,267	66	32	41	55	6.5	102.5	101.5	85	14	204	1100	10000	0,003
LC-5SMCN	040115	NO.5	44,399	82	40	51	75	6.5	132.5	129.5	105	16	262	2200	8000	0,005

# SMBCN-TYPE

※ SHAFT 확장(바이트 간섭 최소화) SHAFT EXTENSION(Minimize the bite-interference)  
 ※ 너트, 초경타입 Carbide, Nut Type



Model	Order Number	Morse Taper	Dimension												Weight MAX.	R.P.M MAX.	Run Out
			GL	A	B	b	L1	L2	L3	L4	L5	C	N	L			
LC-3SMBCN	041113	NO.3	23,825	52	22	10	40	51	5	96	81	10	70	177	330	12000	0,003
LC-4SMBCN	041114	NO.4	31,267	66	32	14	50	55	6.5	111.5	101.5	14	85	213	1100	10000	0,003
LC-5SMBCN	041115	NO.5	44,399	82	40	16	65	75	6.5	146.5	129.5	16	105	276	2200	8000	0,005

NC-TYPE  
 NCP-TYPE  
 NK-NKD TYPE  
 GR-SM TYPE  
 SMP-TYPE  
 D50 TYPE  
 HD-TYPE  
 PT-TYPE  
 LM CENTER  
 LM-H CENTER