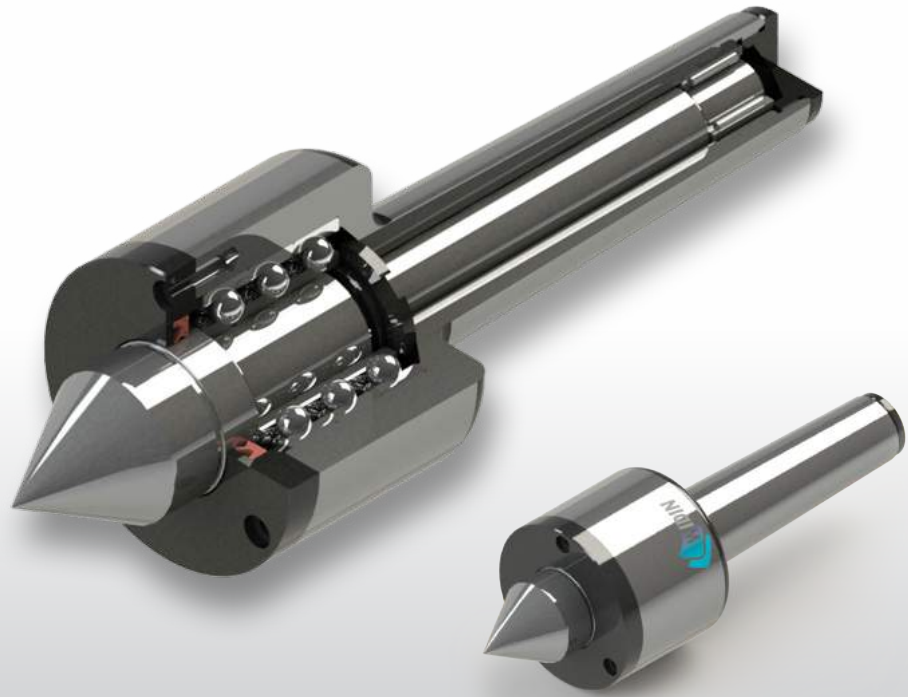


## LC-SMP

- 고속 회전용 라이브센터
- 고속 스피들 베어링을 사용
- SM TYPE 보다 강력한 지지력 및 내구성
- SHAFT 경도 HRC58~62
- RUN OUT 0.003

- Live Center for High Speed Rotation
- Use High Speed Spindle Bearing
- Stronger bearing capacity and durability than SM TYPE
- Hardness of SHAFT : HRC58~62
- RUN OUT 0.003



### SMPB TYPE

바이트 간섭 최소화  
Minimize the bite-interference



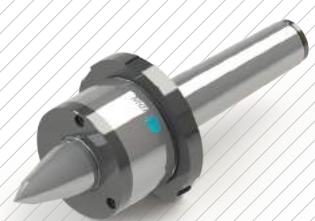
### SMPBC TYPE

바이트 간섭 최소화 / 초경타입  
Minimize the bite-interference / Carbide Type



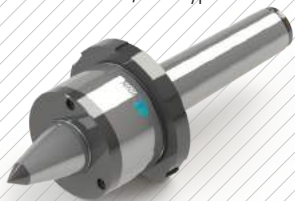
### SMPBN TYPE

바이트 간섭 최소화 / 너트타입  
Minimize the bite-interference / Nut Type



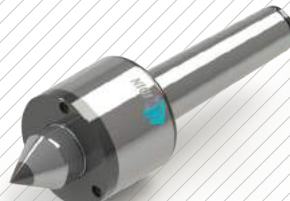
### SMPBCN TYPE

바이트 간섭 최소화 / 초경, 너트 타입  
Minimize the bite-interference /  
Carbide, Nut Type



### SMPC TYPE

초경타입  
Carbide Type



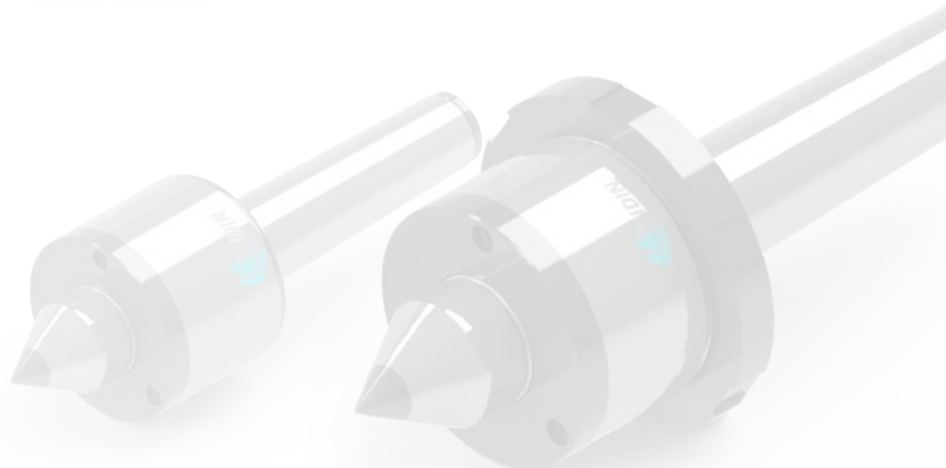
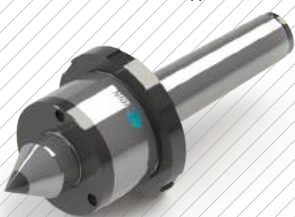
### SMPN TYPE

너트타입  
Nut Type

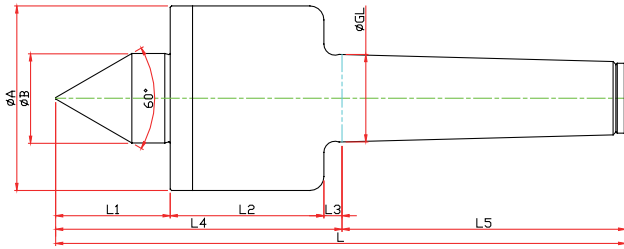


### SMPCN TYPE

초경, 너트타입  
Carbide, Nut Type



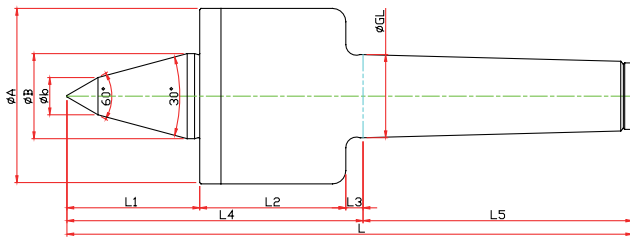
# SMP-TYPE



Model	Order Number	Morse Taper	Dimension										Weight MAX.	R.P.M MAX.	Run Out
			GL	A	B	L1	L2	L3	L4	L5	L				
LC-3SMP	050003	NO.3	23.825	52	22	30	51	5	86	81	167	330	12000	0.003	
LC-4SMP	050004	NO.4	31.267	66	32	41	55	6.5	102.5	101.5	204	1100	10000	0.003	
LC-5SMP	050005	NO.5	44.399	82	40	51	75	6.5	132.5	129.5	262	2200	8000	0.005	

# SMPB-TYPE

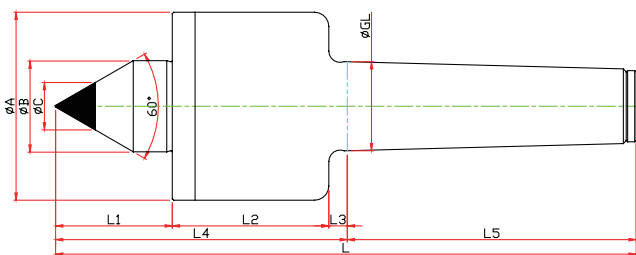
※ SHAFT 확장(바이트 간섭 최소화) SHAFT EXTENSION(Minimize the bite-interference)



Model	Order Number	Morse Taper	Dimension										Weight MAX.	R.P.M MAX.	Run Out
			GL	A	B	b	L1	L2	L3	L4	L5	L			
LC-3SMPB	051003	NO.3	23.825	52	22	10	40	51	5	96	81	177	330	12000	0.003
LC-4SMPB	051004	NO.4	31.267	66	32	14	50	55	6.5	111.5	101.5	213	1100	10000	0.003
LC-5SMPB	051005	NO.5	44.399	82	40	16	65	75	6.5	146.5	129.5	276	2200	8000	0.005

# SMPC-TYPE

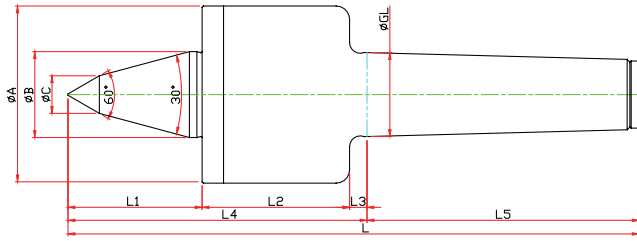
※ 초경타입 Carbide Type



Model	Order Number	Morse Taper	Dimension										Weight MAX.	R.P.M MAX.	Run Out
			GL	A	B	L1	L2	L3	L4	L5	C	L			
LC-3SMPC	050103	NO.3	23.825	52	22	30	51	5	86	81	10	167	330	12000	0.003
LC-4SMPC	050104	NO.4	31.267	66	32	41	55	6.5	102.5	101.5	14	204	1100	10000	0.003
LC-5SMPC	050105	NO.5	44.399	82	40	51	75	6.5	132.5	129.5	18	262	2200	8000	0.005

# SMPBC-TYPE

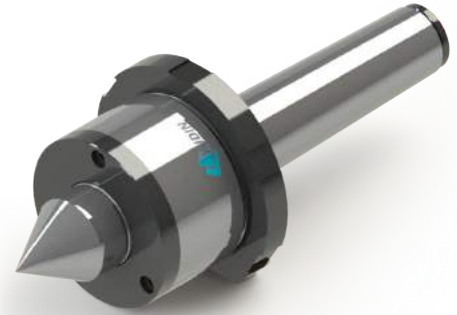
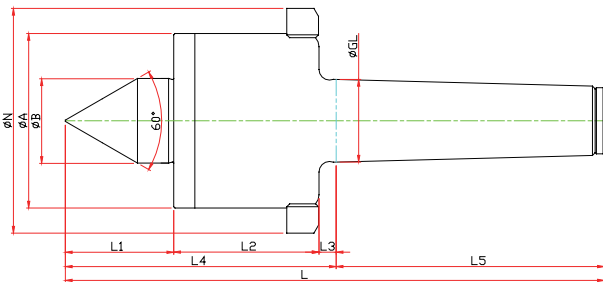
※ SHAFT 확장(바이트 간섭 최소화) SHAFT EXTENTION(Minimize the bite-interference)  
 ※ 초경타입 Carbide Type



Model	Order Number	Morse Taper	Dimension											Weight MAX.	R.P.M MAX.	Run Out
			GL	A	B	b	L1	L2	L3	L4	L5	C	L			
LC-3SMPBC	051103	NO.3	23.825	52	22	10	40	51	5	96	81	10	177	330	12000	0.003
LC-4SMPBC	051104	NO.4	31.267	66	32	14	50	55	6.5	111.5	101.5	14	213	1100	10000	0.003
LC-5SMPBC	051105	NO.5	44.399	82	40	16	65	75	6.5	146.5	129.5	18	276	2200	8000	0.005

# SMPN-TYPE

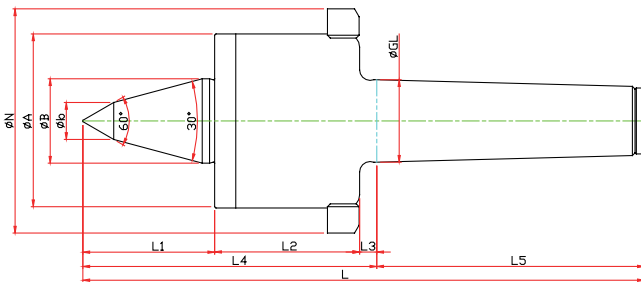
※ 너트타입 Nut Type



Model	Order Number	Morse Taper	Dimension											Weight MAX.	R.P.M MAX.	Run Out
			GL	A	B	L1	L2	L3	L4	L5	N	L				
LC-3SMPN	050013	NO.3	23.825	52	22	30	51	5	86	81	70	167	330	12000	0.003	
LC-4SMPN	050014	NO.4	31.267	66	32	41	55	6.5	102.5	101.5	85	204	1100	10000	0.003	
LC-5SMPN	050015	NO.5	44.399	82	40	51	75	6.5	132.5	129.5	105	262	2200	8000	0.005	

# SMPBN-TYPE

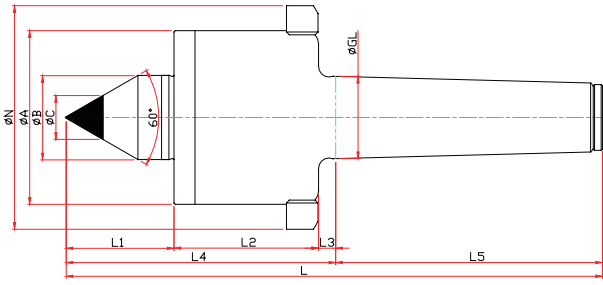
※ SHAFT 확장(바이트 간섭 최소화) SHAFT EXTENTION(Minimize the bite-interference)  
 ※ 너트타입 Nut Type



Model	Order Number	Morse Taper	Dimension											Weight MAX.	R.P.M MAX.	Run Out
			GL	A	B	b	L1	L2	L3	L4	L5	N	L			
LC-3SMPBN	051013	NO.3	23.825	52	22	10	40	51	5	96	81	70	177	330	12000	0.003
LC-4SMPBN	051014	NO.4	31.267	66	32	14	50	55	6.5	111.5	101.5	85	213	1100	10000	0.003
LC-5SMPBN	051015	NO.5	44.399	82	40	16	65	75	6.5	146.5	129.5	105	276	2200	8000	0.005

# SMPCN-TYPE

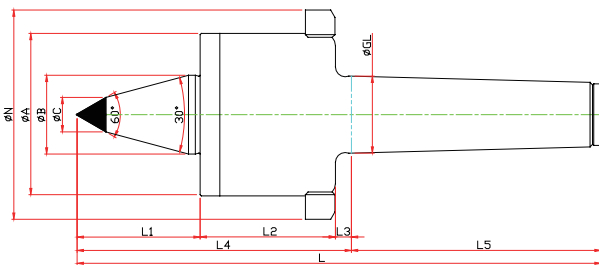
※ 너트, 초경 타입 Nut, Carbide Type



Model	Order Number	Morse Taper	Dimension											Weight MAX.	R.P.M MAX.	Run Out
			GL	A	B	L1	L2	L3	L4	L5	C	N	L			
LC-3SMPCN	050113	NO.3	23,825	52	22	30	51	5	86	81	10	70	167	330	12000	0.003
LC-4SMPCN	050114	NO.4	31,267	66	32	41	55	6.5	102.5	101.5	14	85	204	1100	10000	0.003
LC-5SMPCN	050115	NO.5	44,399	82	40	51	75	6.5	132.5	129.5	18	105	262	2200	8000	0.005

# SMPBCN-TYPE

※ SHAFT 확장(바이트 간섭 최소화) SHAFT EXTENTION(Minimize the bite-interference)  
 ※ 너트, 초경타입 Nut, Carbide Type



Model	Order Number	Morse Taper	Dimension												Weight MAX.	R.P.M MAX.	Run Out
			GL	A	B	b	L1	L2	L3	L4	L5	C	N	L			
LC-3SMPBCN	051113	NO.3	23,825	52	22	10	40	51	5	96	81	10	70	177	330	12000	0.003
LC-4SMPBCN	051114	NO.4	31,267	66	32	14	50	55	6.5	111.5	101.5	14	85	213	1100	10000	0.003
LC-5SMPBCN	051115	NO.5	44,399	82	40	16	65	75	6.5	146.5	129.5	16	105	276	2200	8000	0.005

# SMP SPECIAL

※ 사용자의 조건에 따라 주문, 제작 Customized-special production for user's condition

