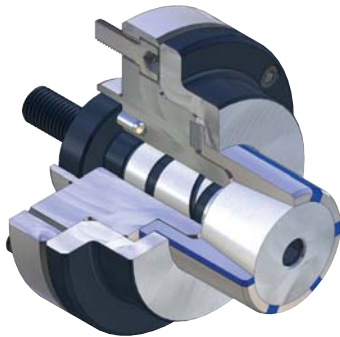


KFR-SE



APPLICATION

Internal clamping of round workpieces. Turning, grinding and toothing operations, as well as for balancing and measuring.

TYPE

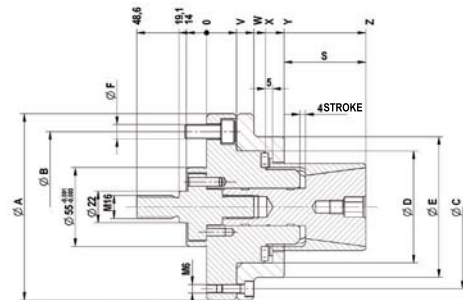
Force-actuated. Ideal for short clamping lengths / workpieces.

CUSTOMER BENEFITS

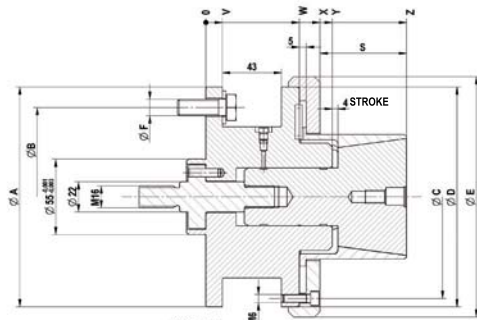
- ② Short setup and non-productive times thanks to great expansion of segment sleeves
- ② Vibration damping due to high vulcanized rubber component of the clamping sleeves
- ② No workpiece tension thanks to def. axial tension against the workpiece stop
- ② High concentricity, axial run-out and repeatability

TECHNICAL FEATURES

- Integrated lubrication
- Air sensing prepared



KFR-SE 06-08
Released



KFR-SE 06-12
Released

C18

KFR-SE segment clamping mandrel, **power-operated with flanged seat**, for internal clamping
Consisting of basic body, clamping taper, intermediate piece, nut

	KFR 00	KFR 01	KFR 02	KFR 03	KFR 04	KFR 05	KFR 06	KFR 07	KFR 08	KFR 09	KFR 10	KFR 11	KFR 12
Segment clamping mandrel	1171410	1171411	1171412	1171413	1171414	1171415	893966 ▲	893967 ▲	893968 ▲	893969 ▲	893970 ▲	893971 ▲	893972 ▲
Base bolt	893800	893801	893802	893803	893804	893805	893806 ▲	893807 ▲	893807 ▲	893809 ▲	893809 ▲	893809 ▲	893809 ▲
Clamping taper	1171436	1171437	1171438	1171439	1171440	1171441	650346 ▲	650347 ▲	650348 ▲	650349 ▲	650350 ▲	650351 ▲	650352 ▲
Adapter power operated	1199848	1199849	1199850	893819	893820	893820	893821	893822	893822	893822	893822	893822	893822
Nut	893814	893814	893814										
F max, in kN	4,65	13,1	19,5	24,4	26,8	33	33	33	33	33	33	33	33
Max, total clamping force	20	56	83	104	114	140	140	140	140	140	140	140	140
Min-Ø unclamped from	14,2	19,7	24,7	35,7	40,7	50,7	60,7	70,7	80,7	90,7	100,7	110,7	120,7
Min-Ø unclamped to	19,7	24,7	35,7	40,7	50,7	60,7	70,7	80,7	90,7	100,7	110,7	120,7	130,7
Clamping-Ø max,	20,7	25,7	36,7	41,7	51,7	61,7	71,7	81,7	91,7	101,7	111,7	121,7	131,7
External-Ø A	100	100	100	100	130	130	130	160	160	160	160	160	160
Pitch diameter B	75	75	75	75	105	105	105	130	130	130	130	130	130
Pitch diameter C	85	85	85	85	114	114	114	145	145	148	148	148	148
Ø D mm	50	50	50	50	78	78	78	100	100	160	160	160	160
Ø E mm	70	70	70	70	98	98	98	130	130	175	175	175	175
Ø F mm	M10	M10	M10	M10	M10	M10	M10	M12	M12	M12	M12	M12	M12
S mm	21	27	27	27	42	42	57	55	55	63	63	63	63
V mm	21	21	21	21	21	21	21	32	32	12	12	12	12
W mm	33	33	33	33	33	33	33	50	50	68	68	68	68
X mm	39	39	39	39	41	41	41	58	58	83	83	83	83
Y mm	50	52	52	52	54	54	54	73	73	92	92	92	92
Z mm	71	79	79	79	96	96	111	128	128	146	146	146	146

Segment clamping mandrel KFR/MFR