

# KFD-EC



### APPLICATION

Especially for use under extreme operating conditions, e.g. dry or raw part machining and/or high coolant pressure.

### TYPE

Power chuck with cylindrical center mount.  
3-jaw version with serration (90°).

### CUSTOMER BENEFITS

- ③ Easy Care: Low-maintenance and -wear
- ③ Lubrication interval, depending on operating conditions, up to approx. 600 operating hours
- ③ Optimized protection against the penetration of dirt thanks to seals built into the jaw guides

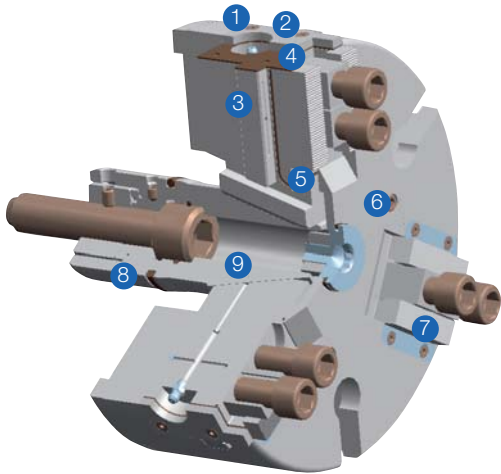
### TECHNICAL FEATURES

- Proven wedge hook system

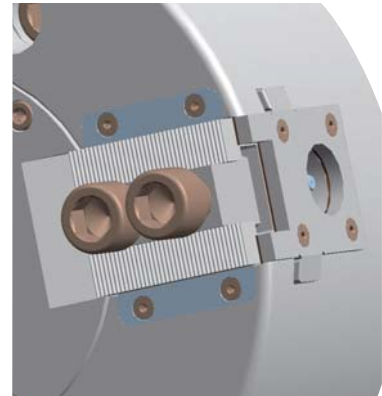
**Note:**

KFD-EC with centrifugal force compensation on request

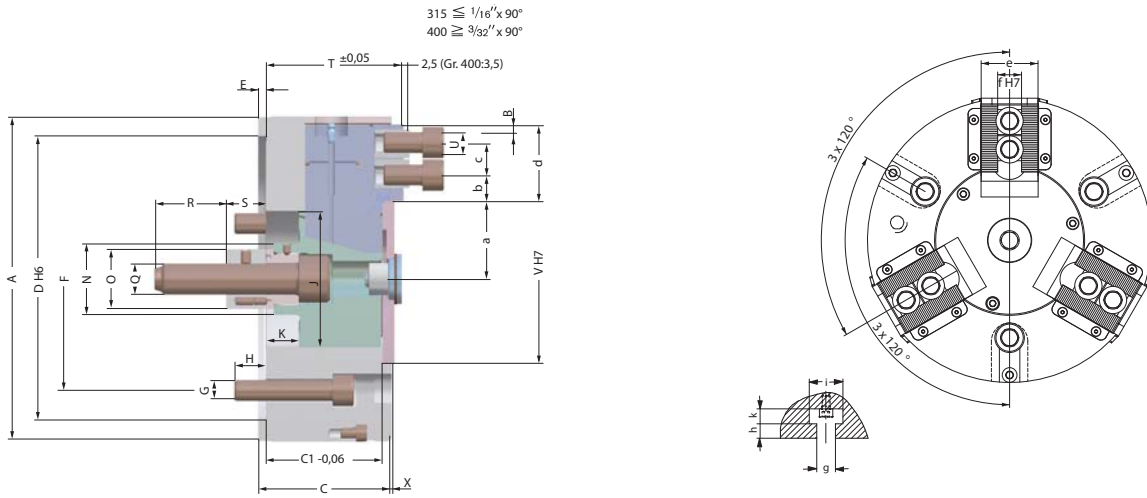
### Structure KFD-EC



- ① Body
- ② End cover
- ③ Base jaw
- ④ Flat seal
- ⑤ Square ring
- ⑥ Cover
- ⑦ Wiper plates
- ⑧ O-Ring
- ⑨ Piston



# KFD-EC 3-jaw, serration 90°



**Low-Maintenance 3-jaw power chuck KFD-EC, with short piston, without force compensation, centric clamping**  
 Adaptor recess, mounting dimensions to DIN 6353

Item no.	166183	166184	166185	166186
Size	200	250	315	400
A mm	200	250	315	400
Jaw travel B mm	6,7	6,7	8	9,3
C mm	86	98	113	121
C1 -0,06 mm	80	92	107	115
Mount DH6	170	220	300	300
E mm	6	6	6	6
F mm	133,4	171,4	235	235
G mm	3xM12	3xM16	3xM20	3xM20
H mm	18	23	31	30
J mm	85	105	120	155
Wedge stroke K mm	25	25	30	35
N mm	45	55	60	60
O mm	40	46	46	55
Q mm	M20	M24	M24	M24
R mm	45	55	55	55
S min.	30	30	30	30
S max.	55	55	60	65
T±0,05 mm	90	105	120	130
U	M12x25	M16x30	M16x30	M20x40
VH7 mm	110	130	160	190
X mm	7	7	9	9
a min.	43,3	53,3	59,5	77,7
a max.	50	60	67,5	87
b min.	8	10	10	14
c min.	19	25	25	31
c max.	34,5	47,5	70,5	87
d mm	45	59	84	107
e mm	35	50	55	60
fH7 mm	17	21	21	25,5
g mm	14	18	18	22
h mm	11	13	13	22
i mm	11	14	14	18
k mm	25	32	32	40
Maximum draw bar pull kN	45	65	80	95
Max. total clamping force kN	90	140	190	250
Max. admissible speed min-1	4000	3200	2800	2000
Moment of inertia J kgm <sup>2</sup>	0,1	0,28	0,89	2,02
Weight without jaws approx. kg	19,3	34,8	63,6	88,4
Actuating cylinders (recommended)	<b>OVS-130</b>	<b>OVS-150</b>	<b>OVS-150</b>	<b>OVS-200</b>

Intermediate adaptors for short taper mount on request

Power chuck without through-hole KFD-EC

# Jaws KFD-EC

C 21

**Reversible top jaws, 3-jaw set**, hardened serration 90° - material: 16 MnCr 5



Item no.	Chuck Size	Jaw length mm	Jaw height mm	Jaw width mm	Serration
118522	200	75	49	36	1/16"x 90°
046414	250/315	103,5	58	50	1/16"x 90°
037531	400	135	65	68	3/32"x 90°

Additionally or later applied, hardened jaws must be ground out in the chuck.

C 21

**Soft top jaws, 3-jaw set**, can be hardened serration 90° - material: 16 MnCr 5



Item no.	Chuck Size	Jaw length mm	Jaw height mm	Jaw width mm	Serration
133153	200	75	53	36,5	1/16"x 90°
133154	250	95	54,5	45	1/16"x 90°
133155	315	103	80	50	1/16"x 90°
133156	400	130	80	50	3/32"x 90°

C 21

**Claw-type jaws, 1 piece**, hardened serration 90° - width of the groove 17



Item no.	Chuck Size	Jaw length mm	Jaw height mm	Claw length mm	Serration
137031	200	67	45	53	1/16"x 90°
137032	200	65	45	46	1/16"x 90°
137033	200	55	45	39	1/16"x 90°
137034	200	50	45	31	1/16"x 90°
137035	200	55	45	27	1/16"x 90°
137036	200	65	45	19	1/16"x 90°
137037	200	65	45	26	1/16"x 90°
137038	200	55	45	24	1/16"x 90°
137039	200	55	45	40	1/16"x 90°

C 21

**Claw-type jaws, 1 piece**, hardened serration 90° - width of the groove 21



Item no.	Chuck Size	Jaw length mm	Jaw height mm	Claw length mm	Serration
137041	250/315	95	50	80	1/16"x 90°
137042	250/315	75	50	60	1/16"x 90°
137043	250/315	60	50	43	1/16"x 90°
137044	250/315	70	50	37	1/16"x 90°
137045	250/315	95	50	25	1/16"x 90°
137046	250/315	80	50	30	1/16"x 90°

C 21

**Claw-type jaws, 1 piece**, hardened serration 90° - width of the groove 25,5



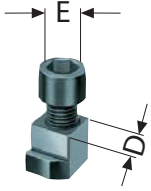
Item no.	Chuck Size	Jaw length mm	Jaw height mm	Claw length mm	Serration
137051	400	130	65	113	3/32"x 90°
137052	400	90	65	67	3/32"x 90°
137053	400	100	65	45	3/32"x 90°
137054	400	130	65	33	3/32"x 90°

# Accessories KFD-EC

C 15

**T-nuts**  
With screw

Item no.	Contents of delivery	D mm	E
241674	piece	17	M12x25
241675	piece	21	M16x30
241676 <sup>1)</sup>	piece	25,5	M20x40



C 15

**Special grease F80 for lathe chucks**  
for lubrication and conservation of clamping force

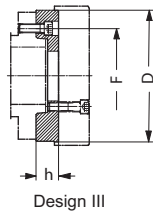
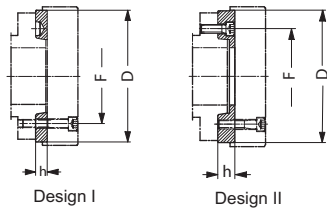
Item no.	Design	Contents
028975	Tin	1 kg
308555	Cartridge	0,5 kg



# Accessories KFD-EC

C 15

**Intermediate adaptor plates with cylindrical centre mount DIN 6353 for 3-jaw chucks**  
Mounting from front to ISO 702-1 (DIN 55026/55021) and ASA B 5.9 A1/A2 with metric mounting bolts



Item no.	Spindle nose size	Size	Design	h mm	F mm	D mm
145127	5	200	II	21	104,8	170
145155	6	200	I	16	133,4	170
145131	6	250	II	27	133,4	220
145135	8	200	III	39	171,4	170
145157	8	250	I	18	171,4	220
145137	8	315/400	II	38	171,4	300
145143	11	250	III	48	235	220
145159	11	315	I	19	235	300
145149	15	400	III	58	330,2	300

All fastening parts are included  
Intermediate adaptor plate for 2- and 4-jaw version on request