

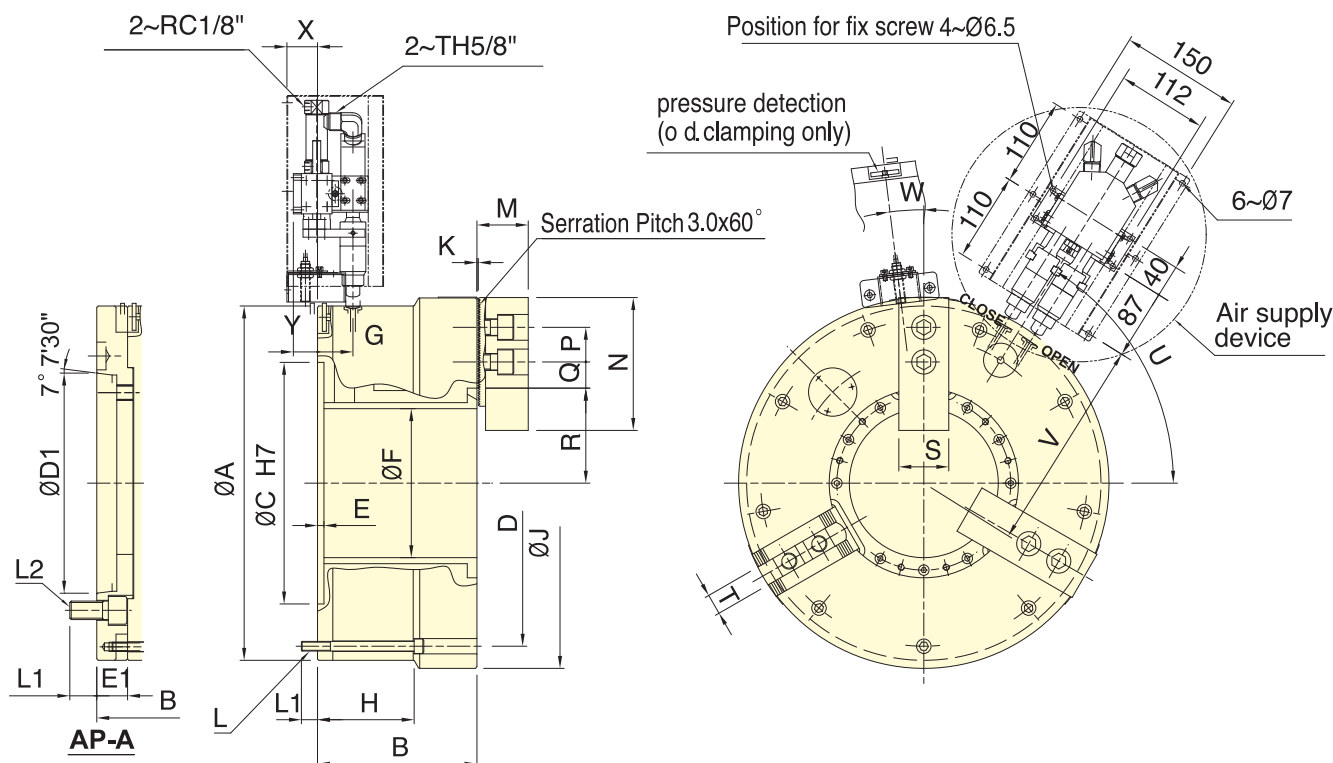
Application/customer benefits

- Large through-hole 3-jaw power chuck with built in air cylinder.
- With built-in "pressure detection" device in chuck which can check the pressure is lowered rapidly within the chuck, guarantee to the security of operating.
- The supply air system of the patent, it is easy to install fast, and without abrasion by traditional sealed ring, that could able to reduce maintenance and installation.

Patent numbers :

Germany : 20.2011.101.818.4 / 20.2012.102.498.5
European Union : EP 2517822 B1
Taiwan : M440159 / M415011

Japan : 3169457 / 3178706
China : ZL 2011 2 0141324.9 / ZL 2012 2 0274549.6
US : US8770222 B2



Specifications

* Subject to technical changes.

Model	Thru-hole Dia (mm)	Jaw stroke (Dia.) (mm)	Chuck Dia. Max. (mm)	Chuck Dia. Min. (mm)	Max. pressure MPa (kgf/cm ²)	Max. clamping force kN (kgf)	Max. speed min ⁻¹ (r.p.m.)	I kg · m ²	Weight (kg)	Air Consumption lit(at 6kgf/cm ²)
AP-145 A11	145	14	420	62	0.6(6.1)	85.0(8667)	1700	3.8	156	182
AP-185 A15	185	14	460	100	0.6(6.1)	110.0(11216)	1300	6	188	223
AP-230 A15	230	17	535	170	0.6(6.1)	125.0(12742)	1300	11.1	265	310
AP-275 A20	275	17	580	200	0.6(6.1)	140.0(14271)	1100	15.5	301	346
AP-320 A20	320	17	658	200	0.6(6.1)	184.0(18762)	1000	27.2	415	505
AP-375 A20	375	24	738	260	0.6(6.1)	188.0(19115)	850	44.2	530	545

Dimensions

Model	A	B	C	D	D1	E	E1	F	G	H	J	K	L	L1	L2	M	N	P	Q max.	Q min.	R max.	R min.	S	T	U	V	W	X	Y		
AP-145 A11	400	198	231	300	365	196.87	8	33	145	34	120	420	3.5	9~M12	20	31	6~M20	63.7	165	43	53.5	23.5	98	91	62	25.5	57°	242	0°	38	20
AP-185 A15	460	198	238	300	405	285.78	8	40	185	44	120	460	3.5	9~M12	20	35	6~M24	63.7	165	43	53.5	23.5	118	111	62	25.5	58°	272	7°	38	20
AP-230 A15	515	226	266	380	483	285.78	8	40	230	49	145	535	3.5	6~M16	24	35	6~M24	71.7	180	60	48.5	18.5	145	136.5	64	25.5	30°	300	7°	33	15
AP-275 A20	560	232	272	380	528	412.78	8	40	275	52	152	580	3.5	6~M16	24	35	6~M24	71.7	180	60	48.5	18.5	167.5	159	64	25.5	30°	322	7°	30	12
AP-320 A20	615	256	306	520	580	412.78	8	50	320	55	116.5	658	3.5	9~M16	25	33	6~M24	81.5	210	60	60.5	24.5	190	181.5	74	30	52°	350	7°	27	9
AP-375 A20	690	272	322	520	650	412.78	8	50	375	55	127	738	3.5	9~M16	28	33	6~M24	81.5	210	60	66.5	24.5	223.5	211.5	74	30	52°	387	7°	27	9

The dimensions and the specifications of **AP-A** type are in the **red data**.