



APPLICATION

Internal clamping of round workpieces. Turning, milling, grinding and toothing operations, as well as for balancing and measuring. Suitable for short clamping lengths and very small clamping diameters starting from 10 mm.

TYPE

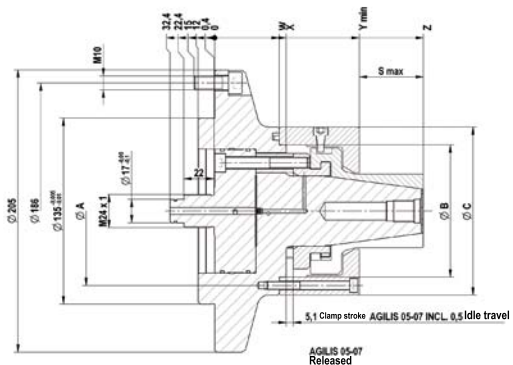
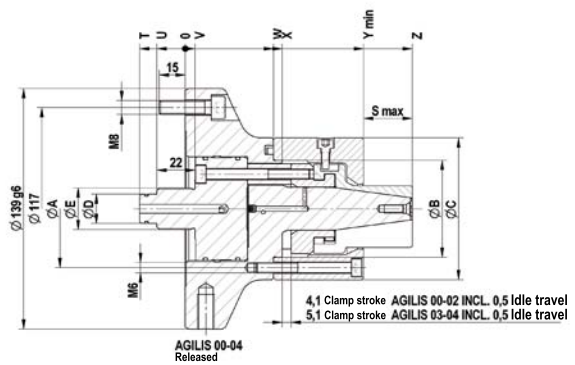
Force-actuated.

CUSTOMER BENEFITS

- ⊕ Short setup and non-productive times thanks to great expansion of segment sleeves
- ⊕ Vibration damping due to high vulcanized rubber component of clamping sleeves
- ⊕ Sturdy clamping of the workpiece thanks to axial tension against workpiece stop
- ⊕ Fast change thanks to bayonet catch
- ⊕ High concentricity, axial run-out and repeatability

TECHNICAL FEATURES

- Manual lubrication
- Air sensing prepared

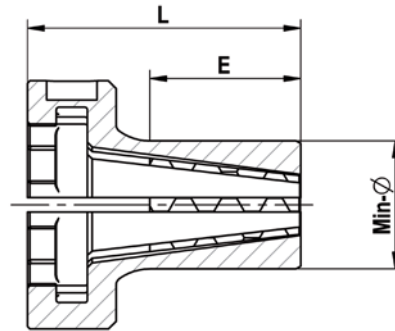
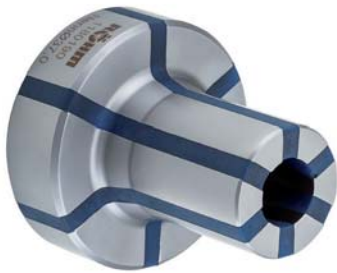


C 18

AGILIS segment clamping mandrel, **power-operated with flanged seat**, for internal clamping

	AGILIS 00	AGILIS 01	AGILIS 02	AGILIS 03	AGILIS 04	AGILIS 05	AGILIS 06	AGILIS 07
Segment clamping mandrel	1180000	1180001	1180002	1180003	1180004	1180005 ▲	1180006 ▲	1180007 ▲
Basic mandrel	1180010	1180011	1180012	1180013	1180014	1180015	1180016	1180017
Adapter power operated	1180030	1180030	1180032	1180032	1180034	1180035	1180036	1180037
Bolt spacer	1180060	1180060	1180062	1180063	1180064	1180065	1180066	1180066
Retaining ring	1180050	1180050	1180052	1180052	1180054	1180055	1180056	1180057
F max, in kN	5	7,5	15	20	25	30	35	35
Max, total clamping force approx, kN	26	39	79	85	106	127	149	149
Min-Ø unclamped from	9,7	13,7	18,7	26,7	36,7	53,7	71,7	94,7
Min-Ø unclamped to	15,7	24,7	34,7	44,7	64,7	84,7	104,7	129,7
Pitch diameter A	54	54	69	69	88	108	127	152
Guide diameter B	42	42	56	56	75	96	114	135
Ø C mm	68	68	82	82	101	122	140	169
Ø D mm	12	12	17	17	17			
Ø E mm	M 16	M 16	M 24x1	M 24x1	M 24x1			
S max, mm	16,8	18,8	23,8	28,1	42,1	46,1	57,1	67,1
T mm	27,7	27,7	25,4	26,4	26,4			
U mm	17,7	17,7	15,4	16,4	16,4			
V mm	4,3	4,3	6,6	5,6	5,6			
W mm	41,5	41,5	52	51	52	47	49	49
X mm	46,5	46,5	57,2	56	57	52	54	54
Y min,	80	80	103	103	108	105	109	109
Z mm	96,8	98,8	126,8	131,1	150,1	151,1	166,1	176,1

Accessories AGILIS



C18

Segment clamping sleeves AGILIS

	AGILIS 00	AGILIS 01	AGILIS 02	AGILIS 03	AGILIS 04	AGILIS 05	AGILIS 06	AGILIS 07
Expansion in Ø mm	0,6	0,6	0,6	1,2	1,2	1,2	1,2	1,2
Total length L	38	40	52,5	57	76	82	95	105
Min-Ø mm	9,7	13,7	18,7	26,7	36,7	53,7	71,7	94,7
Segment sleeve	1180100	1180120	1180140	1180170	1180190	1180220	1180250	1180290
Work stop	1180400 ▲	1180420 ▲	1180440 ▲	1180470 ▲	1180490 ▲	1180520 ▲	1180550 ▲	1180590 ▲
Min-Ø mm	10,2	14,2	19,2	27,7	37,7	54,7	72,7	95,7
Segment sleeve	1180101	1180121	1180141	1180171	1180191	1180221	1180251	1180291
Work stop	1180401 ▲	1180421 ▲	1180441 ▲	1180471 ▲	1180491 ▲	1180521 ▲	1180551 ▲	1180591 ▲
Min-Ø mm	10,7	14,7	19,7	28,7	38,7	55,7	73,7	96,7
Segment sleeve	1180102	1180122	1180142	1180172	1180192	1180222	1180252	1180292
Work stop	1180402 ▲	1180422 ▲	1180442 ▲	1180472 ▲	1180492 ▲	1180522 ▲	1180552 ▲	1180592 ▲
Min-Ø mm	11,2	15,2	20,2	29,7	39,7	56,7	74,7	97,7
Segment sleeve	1180103	1180123	1180143	1180173	1180193	1180223	1180253	1180293
Work stop	1180403 ▲	1180423 ▲	1180443 ▲	1180473 ▲	1180493 ▲	1180523 ▲	1180553 ▲	1180593 ▲
Min-Ø mm	11,7	15,7	20,7	30,7	40,7	57,7	75,7	98,7
Segment sleeve	1180104	1180124	1180144	1180174	1180194	1180224	1180254	1180294
Work stop	1180404 ▲	1180424 ▲	1180444 ▲	1180474 ▲	1180494 ▲	1180524 ▲	1180554 ▲	1180594 ▲
Min-Ø mm	12,2	16,2	21,2	31,7	41,7	58,7	76,7	99,7
Segment sleeve	1180105	1180125	1180145	1180175	1180195	1180225	1180255	1180295
Work stop	1180405 ▲	1180425 ▲	1180445 ▲	1180475 ▲	1180495 ▲	1180525 ▲	1180555 ▲	1180595 ▲
Min-Ø mm	12,7	16,7	21,7	32,7	42,7	59,7	77,7	100,7
Segment sleeve	1180106	1180126	1180146	1180176	1180196	1180226	1180256	1180296
Work stop	1180406 ▲	1180426 ▲	1180446 ▲	1180476 ▲	1180496 ▲	1180526 ▲	1180556 ▲	1180596 ▲
Min-Ø mm	13,2	17,2	22,2	33,7	43,7	60,7	78,7	101,7
Segment sleeve	1180107	1180127	1180147	1180177	1180197	1180227	1180257	1180297
Work stop	1180407 ▲	1180427 ▲	1180447 ▲	1180477 ▲	1180497 ▲	1180527 ▲	1180557 ▲	1180597 ▲
Min-Ø mm	13,7	17,7	22,7	34,7	44,7	61,7	79,7	102,7
Segment sleeve	1180108	1180128	1180148	1180178	1180198	1180228	1180258	1180298
Work stop	1180408 ▲	1180428 ▲	1180448 ▲	1180478 ▲	1180498 ▲	1180528 ▲	1180558 ▲	1180598 ▲
Min-Ø mm	14,2	18,2	23,2	35,7	45,7	62,7	80,7	103,7
Segment sleeve	1180109	1180129	1180149	1180179	1180199	1180229	1180259	1180299
Work stop	1180409 ▲	1180429 ▲	1180449 ▲	1180479 ▲	1180499 ▲	1180529 ▲	1180559 ▲	1180599 ▲
Min-Ø mm	14,7	18,7	23,7	36,7	46,7	63,7	81,7	104,7
Segment sleeve	1180110	1180130	1180150	1180180	1180200	1180230	1180260	1180300
Work stop	1180410 ▲	1180430 ▲	1180450 ▲	1180480 ▲	1180500 ▲	1180530 ▲	1180560 ▲	1180600 ▲
Min-Ø mm	15,2	19,2	24,2	37,7	47,7	64,7	82,7	105,7
Segment sleeve	1180111	1180131	1180151	1180181	1180201	1180231	1180261	1180301
Work stop	1180411 ▲	1180431 ▲	1180451 ▲	1180481 ▲	1180501 ▲	1180531 ▲	1180561 ▲	1180601 ▲
Min-Ø mm	15,7	19,7	24,7	38,7	48,7	65,7	83,7	106,7
Segment sleeve	1180112	1180132	1180152	1180182	1180202	1180232	1180262	1180302
Work stop	1180412 ▲	1180432 ▲	1180452 ▲	1180482 ▲	1180502 ▲	1180532 ▲	1180562 ▲	1180602 ▲
Min-Ø mm		20,2	25,2	39,7	49,7	66,7	84,7	107,7
Segment sleeve		1180133	1180153	1180183	1180203	1180233	1180263	1180303
Work stop		1180433 ▲	1180453 ▲	1180483 ▲	1180503 ▲	1180533 ▲	1180563 ▲	1180603 ▲
Min-Ø mm		20,7	25,7	40,7	50,7	67,7	85,7	108,7
Segment sleeve		1180134	1180154	1180184	1180204	1180234	1180264	1180304
Work stop		1180434 ▲	1180454 ▲	1180484 ▲	1180504 ▲	1180534 ▲	1180564 ▲	1180604 ▲
Min-Ø mm		21,2	26,2	41,7	51,7	68,7	86,7	109,7
Segment sleeve		1180135	1180155	1180185	1180205	1180235	1180265	1180305
Work stop		1180435 ▲	1180455 ▲	1180485 ▲	1180505 ▲	1180535 ▲	1180565 ▲	1180605 ▲
Min-Ø mm		21,7	26,7	42,7	52,7	69,7	87,7	110,7
Segment sleeve		1180136	1180156	1180186	1180206	1180236	1180266	1180306
Work stop		1180436 ▲	1180456 ▲	1180486 ▲	1180506 ▲	1180536 ▲	1180566 ▲	1180606 ▲

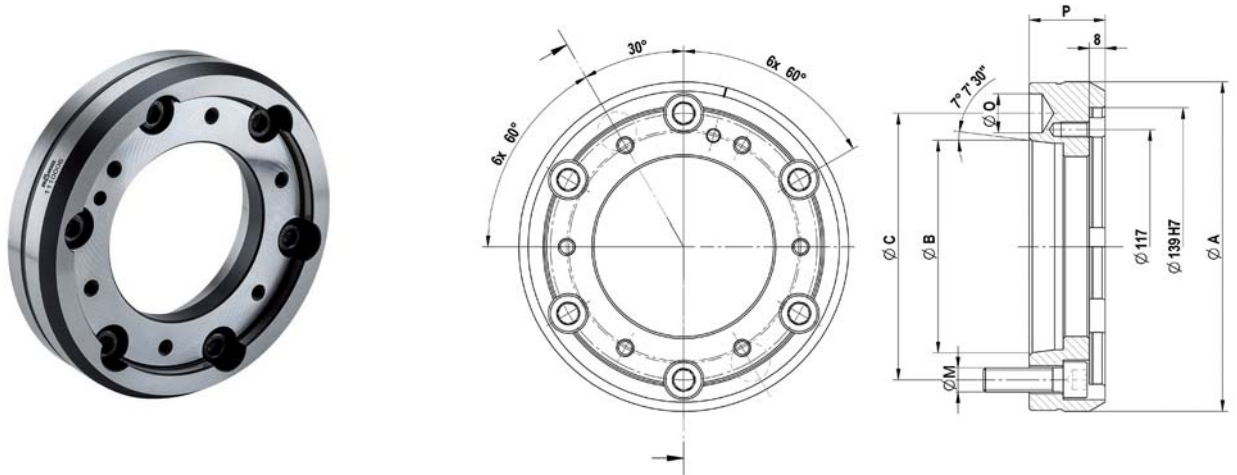
Accessories AGILIS

C18

Segment clamping sleeves AGILIS

	AGILIS 00	AGILIS 01	AGILIS 02	AGILIS 03	AGILIS 04	AGILIS 05	AGILIS 06	AGILIS 07
Expansion in Ø mm	0,6	0,6	0,6	1,2	1,2	1,2	1,2	1,2
Total length L	38	40	52,5	57	76	82	95	105
Min-Ø mm		22,2	27,2	43,7	53,7	70,7	88,7	111,7
Segment sleeve		1180137	1180157	1180187	1180207	1180237	1180267	1180307
Work stop		1180437 ▲	1180457 ▲	1180487 ▲	1180507 ▲	1180537 ▲	1180567 ▲	1180607 ▲
Min-Ø mm		22,7	27,7	44,7	54,7	71,7	89,7	112,7
Segment sleeve		1180138	1180158	1180188	1180208	1180238	1180268	1180308
Work stop		1180438 ▲	1180458 ▲	1180488 ▲	1180508 ▲	1180538 ▲	1180568 ▲	1180608 ▲
Min-Ø mm		23,2	28,2		55,7	72,7	90,7	113,7
Segment sleeve		1180139	1180159		1180209	1180239	1180269	1180309
Work stop		1180439 ▲	1180459 ▲		1180509 ▲	1180539 ▲	1180569 ▲	1180609 ▲
Min-Ø mm		23,7	28,7		56,7	73,7	91,7	114,7
Segment sleeve		1180350	1180160		1180210	1180240	1180270	1180310
Work stop		1180630 ▲	1180460 ▲		1180510 ▲	1180540 ▲	1180570 ▲	1180610 ▲
Min-Ø mm		24,2	29,2		57,7	74,7	92,7	115,7
Segment sleeve		1180351	1180161		1180211	1180241	1180271	1180311
Work stop		1180631 ▲	1180461 ▲		1180511 ▲	1180541 ▲	1180571 ▲	1180611 ▲
Min-Ø mm		24,7	29,7		58,7	75,7	93,7	116,7
Segment sleeve		1180352	1180162		1180212	1180242	1180272	1180312
Work stop		1180632 ▲	1180462 ▲		1180512 ▲	1180542 ▲	1180572 ▲	1180612 ▲
Min-Ø mm			30,2		59,7	76,7	94,7	117,7
Segment sleeve			1180163		1180213	1180243	1180273	1180313
Work stop			1180463 ▲		1180513 ▲	1180543 ▲	1180573 ▲	1180613 ▲
Min-Ø mm			30,7		60,7	77,7	95,7	118,7
Segment sleeve			1180164		1180214	1180244	1180274	1180314
Work stop			1180464 ▲		1180514 ▲	1180544 ▲	1180574 ▲	1180614 ▲
Min-Ø mm			31,2		61,7	78,7	96,7	119,7
Segment sleeve			1180165		1180215	1180245	1180275	1180315
Work stop			1180465 ▲		1180515 ▲	1180545 ▲	1180575 ▲	1180615 ▲
Min-Ø mm			31,7		62,7	79,7	97,7	120,7
Segment sleeve			1180166		1180216	1180246	1180276	1180316
Work stop			1180466 ▲		1180516 ▲	1180546 ▲	1180576 ▲	1180616 ▲
Min-Ø mm			32,2		63,7	80,7	98,7	121,7
Segment sleeve			1180167		1180217	1180247	1180277	1180317
Work stop			1180467 ▲		1180517 ▲	1180547 ▲	1180577 ▲	1180617 ▲
Min-Ø mm			32,7		64,7	81,7	99,7	122,7
Segment sleeve			1180168		1180218	1180248	1180278	1180318
Work stop			1180468 ▲		1180518 ▲	1180548 ▲	1180578 ▲	1180618 ▲
Min-Ø mm			33,2			82,7	100,7	123,7
Segment sleeve			1180169			1180249	1180279	1180319
Work stop			1180469 ▲			1180549 ▲	1180579 ▲	1180619 ▲
Min-Ø mm			33,7			83,7	101,7	124,7
Segment sleeve			1180360			1180370	1180280	1180320
Work stop			1180640 ▲			1180650 ▲	1180580 ▲	1180620 ▲
Min-Ø mm			34,2			84,7	102,7	125,7
Segment sleeve			1180361			1180371	1180281	1180321
Work stop			1180641 ▲			1180651 ▲	1180581 ▲	1180621 ▲
Min-Ø mm			34,7				103,7	126,7
Segment sleeve			1180362				1180282	1180322
Work stop			1180642 ▲				1180582 ▲	1180622 ▲
Min-Ø mm							104,7	127,7
Segment sleeve							1180283	1180323
Work stop							1180583 ▲	1180623 ▲
Min-Ø mm								128,7
Segment sleeve								1180324
Work stop								1180624 ▲
Min-Ø mm								129,7
Segment sleeve								1180325
Work stop								1180625 ▲

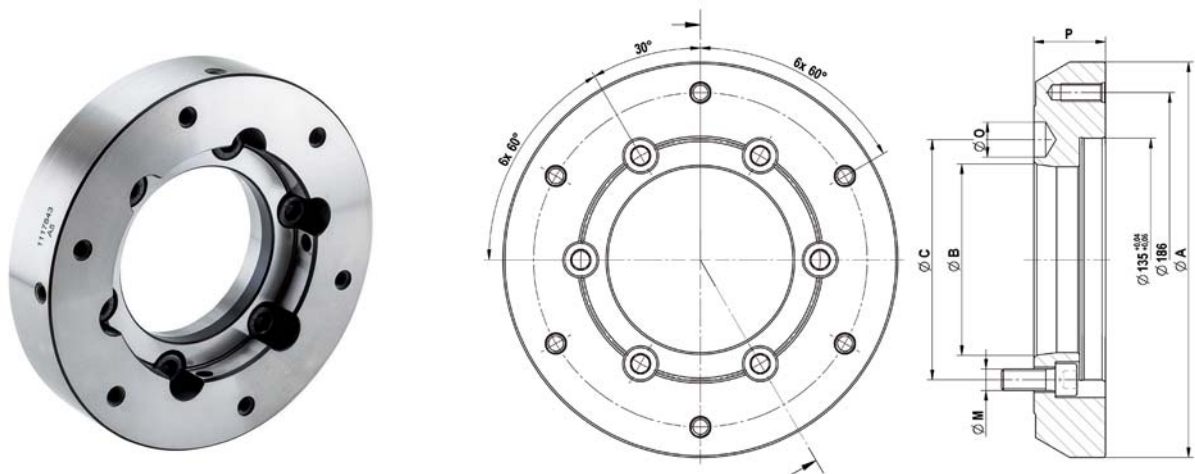
Accessories AGILIS



C 18

Intermediate flange ISO 702-1 (DIN 55028), for size 00-04

	Nr. 5 (A 05)	Nr. 6 (A 06)	Nr. 8 (A 08)	Nr. 11 (A 11)
Intermediate flange	1110005	1110006	1110008	1110011 ▲
Ø A mm	165	170	220	282
Ø B mm	82,563	106,375	139,719	196,869
Ø C mm	104,8	133,4	171,4	235
Thread-Ø M	M10	M12	M16	M20
Ø O mm	16,3	19,45	24,2	29,4
P mm	36	38	45	45

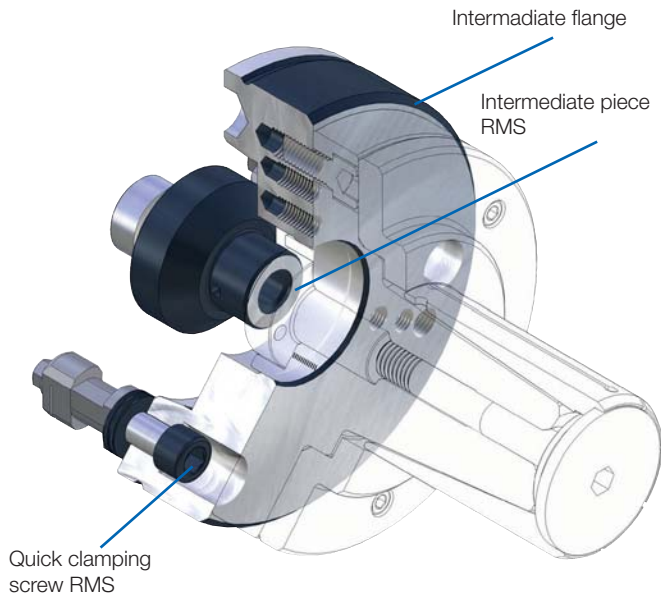


C 18

Intermediate flange ISO 702-1 (DIN 55028)

	Nr. 5 (A5)	Nr. 6 (A6)	Nr. 8 (A8)
Intermediate flange	1072115	1072117	1072119
For	KZF-S 80/AGILIS 05-07	KZF-S 120/AGILIS 05-07	KZF-S 120/AGILIS 05-07
Short-taper-Ø B	82,563	106,375	139,719
Short-taper pitch circle Ø C	104,8	133,4	171,4
Flange outer-Ø A	220	220	220
Ø D	135	135	135
Ø F mm	186	186	186
Ø O mm	16,3	19,45	24,2
Thread-Ø M	M10	M12	M16
Total length flange P	40	40	40

Accessories AGILIS



APPLICATION

For manual clamping devices exchange in a minimum of time.

TYPE

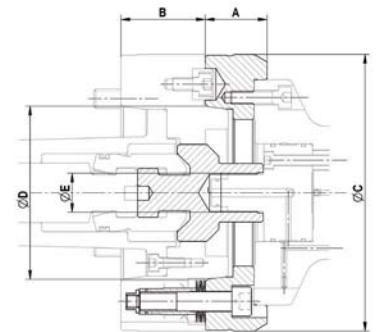
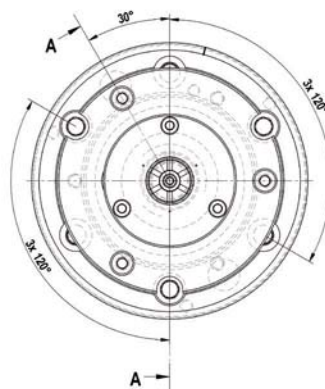
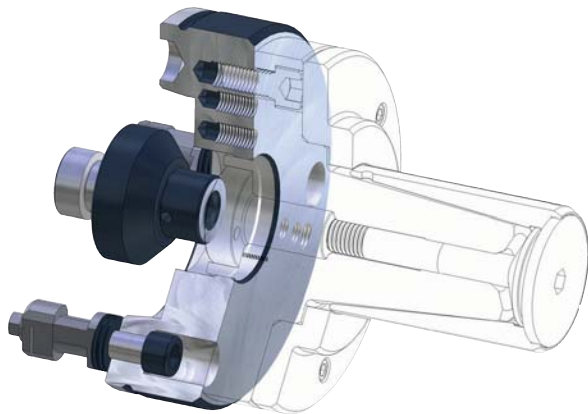
Manual quick-change system for clamping devices. Fits ABSIS (269-00), AGILIS (296-00). Central lubrication and / or air sensing control possible.

CUSTOMER BENEFITS

- ⌚ Manual clamping devices change in about 30 seconds
- ⌚ High change precision within 0.005 mm
- ⌚ Quick change of different clamping devices with short time, similar to the automatic or semiautomatic clamping devices changing systems

TECHNICAL FEATURES

- Quick-change system suitable due to recording RMS see quick-change system RMS (Product Group 6)
- Corresponds to the guidelines of the Employer's Liability Insurance Association in combination with ROHM safety clamping cylinder OVS and LVS



C18

RMS quick-change system, hand-operated for clamping devices

	A 06	A 08
For	AGILIS 00-04 296-00	AGILIS 00-04 296-00
RMS - complete (flange incl, quick-clamping screw)	1180340 ▲	1180342 ▲
Adapters RMS	look Type 296-00 AGILIS	look Type 296-00 AGILIS
A	38	45
Ø B	170	215
Ø C	133,4	171,4
Ø D	106,375	139,719
Ø E mm	M12	M16
Ø F mm	139 H7	139 H7

Matching intermediate pieces RMS KK6 and RMS KK8 can be found directly in the product table of the segment clamping mandrel AGILIS